

# ON Semiconductor

## Is Now

# onsemi™

To learn more about onsemi™, please visit our website at  
[www.onsemi.com](http://www.onsemi.com)

---

**onsemi** and **onsemi** and other names, marks, and brands are registered and/or common law trademarks of Semiconductor Components Industries, LLC dba "**onsemi**" or its affiliates and/or subsidiaries in the United States and/or other countries. **onsemi** owns the rights to a number of patents, trademarks, copyrights, trade secrets, and other intellectual property. A listing of **onsemi** product/patent coverage may be accessed at [www.onsemi.com/site/pdf/Patent-Marking.pdf](http://www.onsemi.com/site/pdf/Patent-Marking.pdf). **onsemi** reserves the right to make changes at any time to any products or information herein, without notice. The information herein is provided "as-is" and **onsemi** makes no warranty, representation or guarantee regarding the accuracy of the information, product features, availability, functionality, or suitability of its products for any particular purpose, nor does **onsemi** assume any liability arising out of the application or use of any product or circuit, and specifically disclaims any and all liability, including without limitation special, consequential or incidental damages. Buyer is responsible for its products and applications using **onsemi** products, including compliance with all laws, regulations and safety requirements or standards, regardless of any support or applications information provided by **onsemi**. "Typical" parameters which may be provided in **onsemi** data sheets and/or specifications can and do vary in different applications and actual performance may vary over time. All operating parameters, including "Typicals" must be validated for each customer application by customer's technical experts. **onsemi** does not convey any license under any of its intellectual property rights nor the rights of others. **onsemi** products are not designed, intended, or authorized for use as a critical component in life support systems or any FDA Class 3 medical devices or medical devices with a same or similar classification in a foreign jurisdiction or any devices intended for implantation in the human body. Should Buyer purchase or use **onsemi** products for any such unintended or unauthorized application, Buyer shall indemnify and hold **onsemi** and its officers, employees, subsidiaries, affiliates, and distributors harmless against all claims, costs, damages, and expenses, and reasonable attorney fees arising out of, directly or indirectly, any claim of personal injury or death associated with such unintended or unauthorized use, even if such claim alleges that **onsemi** was negligent regarding the design or manufacture of the part. **onsemi** is an Equal Opportunity/Affirmative Action Employer. This literature is subject to all applicable copyright laws and is not for resale in any manner. Other names and brands may be claimed as the property of others.



## MOSFET Gate-Charge Origin and its Applications

### Introduction

Engineers often estimate switching time based on total drive resistances and gate charge or capacitance. Since capacitance is non-linear, gate charge is an easier parameter for estimating switching behavior. However, the MOSFET switching time estimated from datasheet parameters does not normally match what the oscilloscope shows. This is due to differences between the parameters taken from the datasheet and the application conditions. For example, in Figure 1 the gate charge of NTD5805N was characterized at two different conditions and results varied greatly. If datasheet values are characterized at conditions different from the user, the differences will introduce error in the estimation. This article will explain how to better estimate gate charge from datasheets and their applications. For simplicity in this article, power MOSFET NTD5805N's datasheet [1] is used with circuit conditions of 32 V and 30 A.

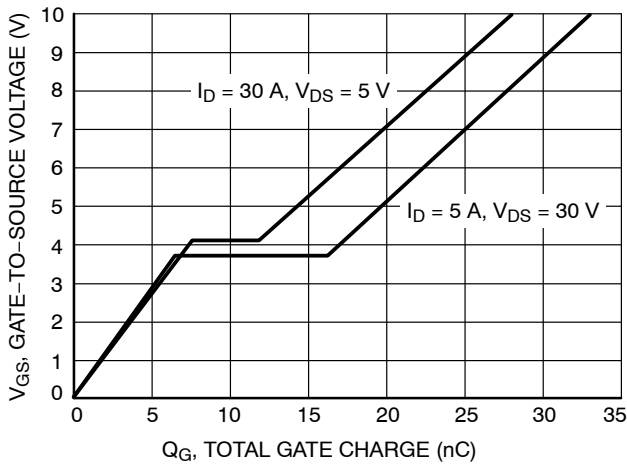


Figure 1. NTD5805N Gate-to-Source Voltage vs. Total Charge

### Inductive Switching

In switch-mode power supplies, MOSFETs switch inductive loads. Figure 2 shows a basic buck circuit with high side MOSFET turn on transition. Before the high side MOSFET is turned on, inductor current is flowing through the low side MOSFET's body diode ( $V_{BD}$ ). The turn-on transition is broken down into three regions (Figure 3). These regions will be individually explained. Figure 4 shows the transition through these regions in terms of output characteristics. Gate charge can be derived from the non-linear capacitance curves, which are fully characterized at a range of  $V_{DS}$  ( $V_{GS} = 0$  V) and  $V_{GS}$  ( $V_{DS} = 0$  V) as shown in Figure 5.

ON Semiconductor®

[www.onsemi.com](http://www.onsemi.com)

### APPLICATION NOTE

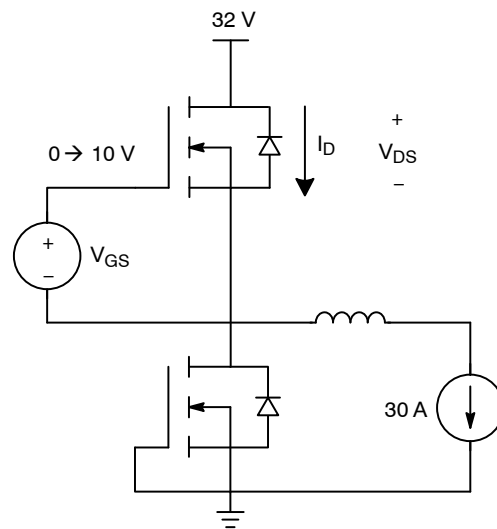


Figure 2. Inductive Switching

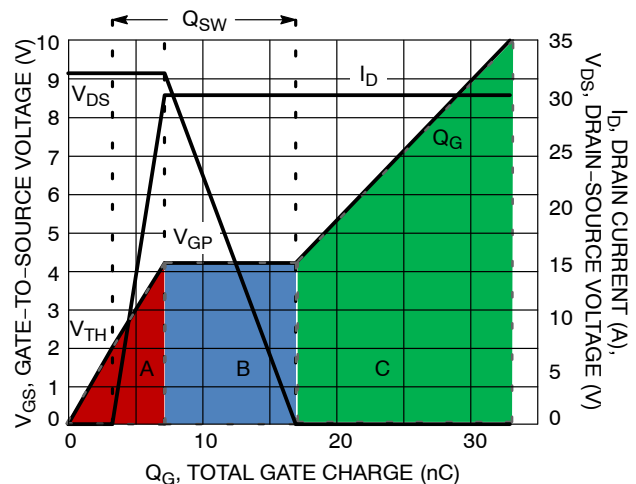
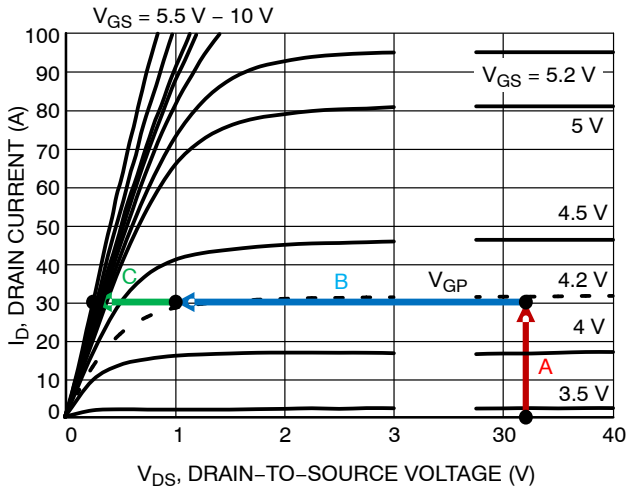


Figure 3. Gate-to-Source Voltage and Switching vs. Total Charge



**Figure 4. On-Region Characteristics for Different Gate-to-Source Voltages**

**Region A: MOSFET QGS**

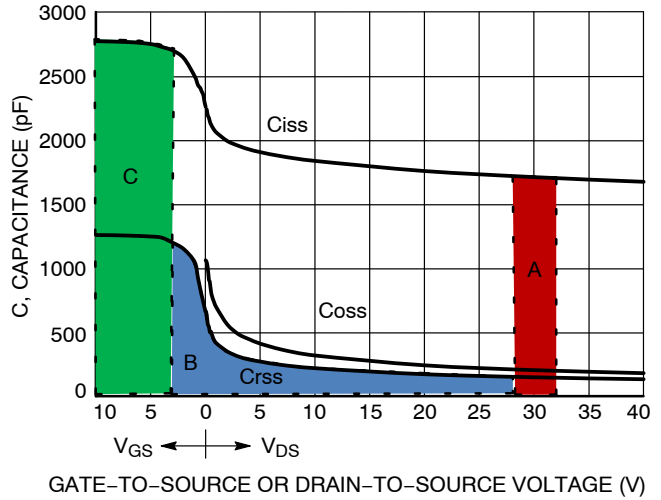
This is the region where gate-to-source voltage ( $V_{GS}$ ) rises from 0 V to its plateau voltage ( $V_{GP}$ ). When the gate rises from 0 V to its threshold voltage ( $V_{TH}$ ), the MOSFET is still off with no drain current ( $I_D$ ) flow and drain-to-source voltage ( $V_{DS}$ ) remains clamped. Once gate voltage reaches  $V_{TH}$ , the MOSFET starts conducting and  $I_D$  rises. Its  $V_{DS}$  is still clamped to  $V_{DD} + V_{BD}$  until all inductor current is being supplied by the MOSFET. In this region, gate current is used to charge the input capacitance ( $C_{iss}$ ) with its  $V_{DS}$  being clamped. Since voltage across gate-to-drain changes from  $V_{DD}$  to  $V_{DD} - V_{GP}$ , charge is stored from the input capacitance curve at that range. It can be approximated by Equation 1.

$$Q_{GS} \cong \int_{V_{DD} - V_{GP}}^{V_{DD}} C_{iss}(V_{DS}) \cdot dV \quad (\text{eq. 1})$$

**Region B: MOSFET QGD**

This is the region where  $V_{GS}$  is held at  $V_{GP}$  and remains flat.  $I_D$  clamps to inductor current and  $V_{DS}$  clamping effect is gone, MOSFET's  $V_{DS}$  starts to drop. It can be seen from  $I_D$ - $V_{DS}$  curve (Figure 4) that  $V_{GS}$  remains relatively constant at fixed  $I_D$  with varying  $V_{DS}$ . This is the origin of the flat plateau seen on the gate charge curve. During this region, the gate current is used to charge the reverse transfer capacitance ( $C_{rss}$ ).  $V_{DS}$  is decreasing from  $V_{DD} + V_{BD}$  to  $I_D * R_{DS(ON)}$ . Thus the voltage across  $C_{rss}$  (gate-to-drain capacitance) changes from  $\{(V_{DD} + V_{BD}) - V_{GP}\}$  to  $\{I_D * R_{DS(ON)} - V_{GP}\}$ . The polarity of voltage is reversed. Charge (Equation 2) needed for this transition is shown as the area under region B capacitance curve of Figure 5.

$$Q_{GD} \cong \int_0^{V_{DD} - V_{GP}} C_{rss}(V_{DS}) \cdot dV + \int_0^{V_{GP}} C_{rss}(V_{GS}) \cdot dV \quad (\text{eq. 2})$$



**Figure 5. Capacitance Variation**

**Region C: MOSFET Remaining Total Gate Charge**

This is the region where the MOSFET enters into ohmic mode operation as seen in the  $I_D$ - $V_{DS}$  curve (Figure 4).  $V_{GS}$  rises from  $V_{GP}$  to driver supply voltage ( $V_{GDR}$ ). Both  $I_D$  and  $V_{DS}$  remain relatively constant.  $I_D$  is still clamped by the inductor current. As  $V_{GS}$  increases, the channel ( $V_{DS} = I * R_{DS(ON)}$ ) continue to be more enhanced and  $V_{DS}$  dropped slightly. The charge needed is shown as region C in Figure 5 and can be calculated by Equation 3.

$$Q_C \cong \int_{V_{GP}}^{V_{GDR}} C_{iss}(V_{GS}) \cdot dV \quad (\text{eq. 3})$$

**Getting the Gate Charge for Different Conditions**

It was explained above how different sections of gate charge are formed. Circuit conditions determine gate charge boundaries between regions A, B and C (Figure 6). The range is set by  $V_{DD}$  and  $V_{GDR}$ .  $V_{GP}$  can be found from  $I_D$ - $V_{DS}$  curves at inductor current ( $I_D$ ) and supply voltage ( $V_{DD}$ ). With these three voltages found, gate charge equals to area under those capacitance regions. An example is shown in Table 1 employing methodology described the same circuit conditions as characterization data in Figure 1 using only simple estimations. Total gate charge ( $Q_{GTOT}$ ) is the total amount charge stored by the MOSFET on its gate up to the driver voltage. Switching gate charge ( $Q_{SW}$ ) is the amount charge needed to complete  $I_D$  and  $V_{DS}$  transitions.

# AND9083/D

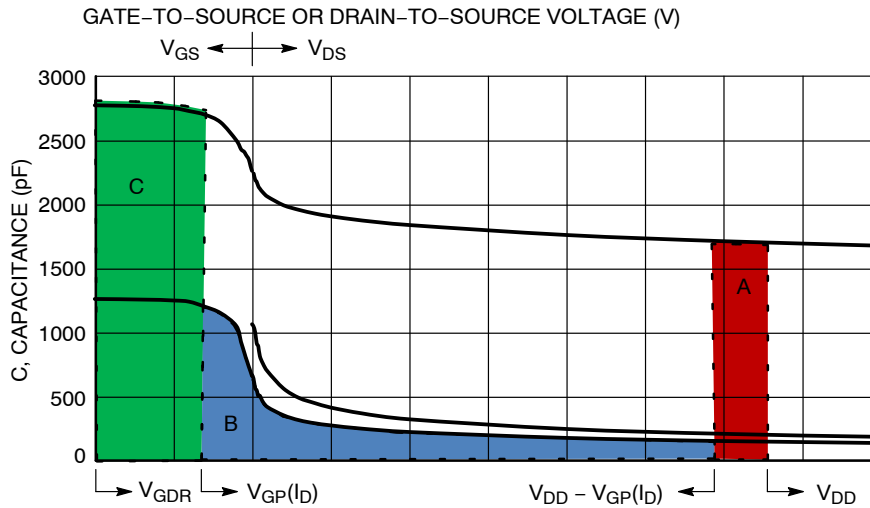


Figure 6. Circuit Parameters Effects

Table 1. ESTIMATION OF GATE CHARGE BASED ON METHOD DESCRIBED

Parameters	$V_{DD} = 30\text{ V}, I_D = 5\text{ A}$	$V_{DD} = 5\text{ V}, I_D = 30\text{ A}$	Refer to
$V_{GP}$	3.6 V	4.2 V	$I_D - V_{DS}$ Curve
Region A – Charge	$3.6\text{ V} * 1.7\text{ nF} \approx 6.1\text{ nC}$	$4.2\text{ V} * 1.9\text{ nF} \approx 8.0\text{ nC}$	Capacitance Curve
Region B – Charge	$(30\text{ V} - 3.6\text{ V}) * 0.2\text{ nF} + 3.6\text{ V} * 1.1\text{ nF} \approx 9.2\text{ nC}$	$(5\text{ V} - 4.2\text{ V}) * 0.4\text{ nF} + 3.6\text{ V} * 1.1\text{ nF} \approx 4.9\text{ nC}$	
Region C – Charge	$(10\text{ V} - 3.6\text{ V}) * 2.7\text{ nF} \approx 18\text{ nC}$	$(10\text{ V} - 4.2\text{ V}) * 2.7\text{ nF} \approx 15.95\text{ nC}$	
$Q_{GTOT}$	33 nC	29 nC	Sum A, B & C
$V_{TH}$	2.7 V	2.7 V	Datasheet Value
$Q_{SW}$	$(3.6\text{ V} - 2.7\text{ V}) / 3.6\text{ V} * 6.1\text{ nF} + 9.2\text{ nC} \approx 11\text{ nC}$	$(4.2\text{ V} - 2.7\text{ V}) / 4.2\text{ V} * 8.0\text{ nF} + 4.9\text{ nC} \approx 7.8\text{ nC}$	$Q_{A(\text{after } V_{TH})} + Q_B$

## Resistive Switching

LED and heating coil are examples of resistive switching. The main difference between inductive and resistive switching is that there is no clamping of drain current involved. Before reaching its threshold voltage, the FET is off. When the MOSFET starts to turn-on in the saturation region,  $V_{DS}$  is dependent on resistive load and voltage supply. Once the FET is in ohmic mode, the MOSFET and the load become a simple resistor divider. There is no flat plateau region as both  $V_{DS}$  and  $I_D$  are changing resulting in increasing  $V_{GS}$  (Figure 9 region E). Fortunately,  $Q_{SW}$  and  $Q_{GTOT}$  are unchanged from inductive switching.

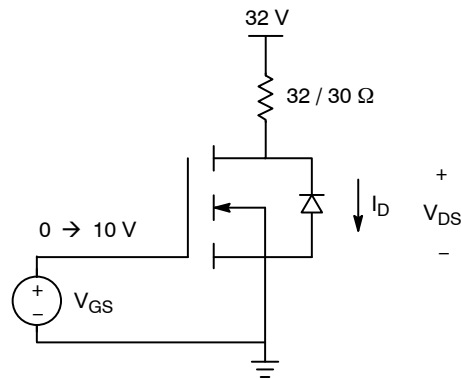


Figure 7. Resistive Switching

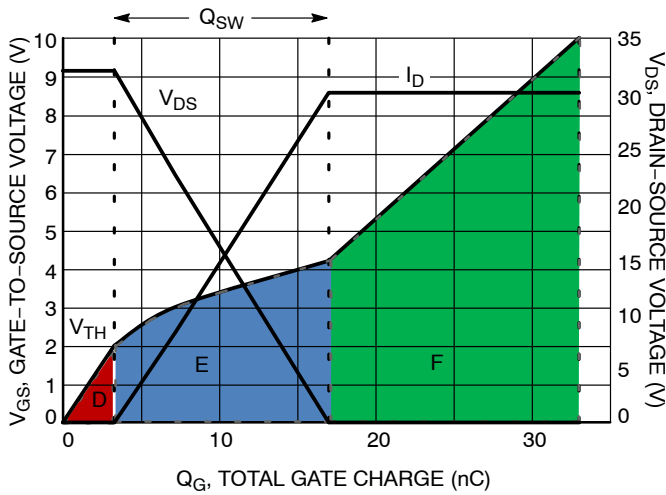


Figure 8. Gate-to-Source Voltage and Switching vs. Total Charge (Resistive Switching)

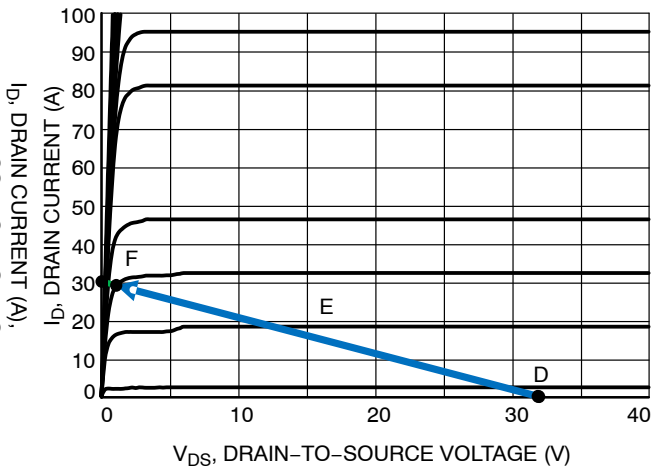


Figure 9. On-Region Characteristics for Different Gate-to-Source Voltages

**Gate Charge Applications**

One important aspect of MOSFET applications is the power losses. There are several power loss components. Conduction loss is power dissipated in the resistive element ( $R_{DS(ON)}$ ) of the channel. Switching loss ( $P_{SW}$ ) is power dissipated in switching current and voltage. Switching gate

charge ( $Q_{SW}$ ) is the amount of current the gate driver needed to supply to complete the switching transitions of drain voltage and current. Gate charge loss ( $P_{QG}$ ) is power dissipated due to charging and discharging of the gate.

$$P_{QG} = Q_{GTOT@VGDR} \cdot V_{GDR} \cdot F_{SW} \tag{eq. 4}$$

$$Q_{SW} = Q_{GS(afterVth)} + Q_{GD} \tag{eq. 5}$$

$$T_{SW(ON)} = Q_{SW} / \left( \frac{V_{GDR} - V_{GP}}{R_{DR} + R_G} \right), T_{SW(OFF)} = Q_{SW} / \left( \frac{V_{GP}}{R_{DR} + R_G} \right) \tag{eq. 6}$$

$$P_{SW(inductive)} = 0.5 \cdot V_{DD} \cdot I_D \cdot (T_{SW(ON)} + T_{SW(OFF)}) \cdot F_{SW} \tag{eq. 7}$$

$$P_{SW(resistive)} = 0.25 \cdot V_{DD} \cdot I_D \cdot (T_{SW(ON)} + T_{SW(OFF)}) \cdot F_{SW} \tag{eq. 8}$$

Derivations above do not apply to zero voltage switching applications. For example in synchronous rectification, MOSFET has a negative diode voltage drop across  $V_{DS}$  (body diode conduction) before it is turned on. They can still be derived from the capacitances ( $V_{GS}$  side) and  $I_D$ - $V_{DS}$  curve using the same idea.

**Conclusion**

With different circuit conditions, it has been shown how datasheet gate charge parameters changes. Only simple mathematics is needed in getting the right gate charge. The origins of gate charge are analytically explained. Through understanding of MOSFET gate charge, more accurate estimations can be made in designing for different circuit conditions (Figure 10). Trade offs are evaluated in selecting gate drive schemes. A lower gate drive voltage would save some energy but must be balanced between higher on-resistance. Using methods described by D. Lee in [2], extreme operating conditions like repetitive unclamped

inductive switching or short-circuit performance can also be evaluated.

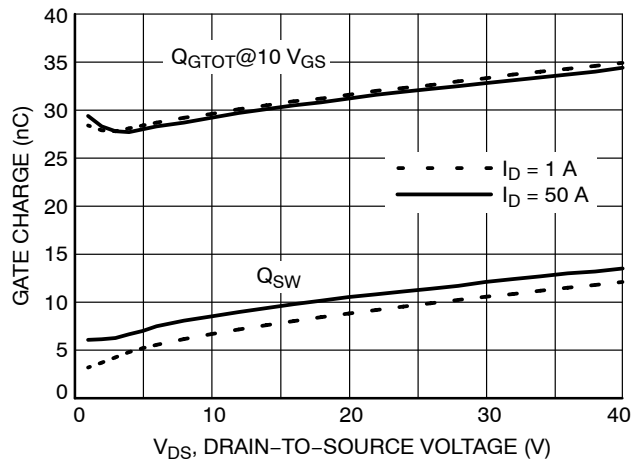


Figure 10. NTD5805N Gate Charge at Various Conditions

APPENDIX A: ESTIMATION WITHOUT CAPACITANCE-vs- $V_{GS}$  CURVE

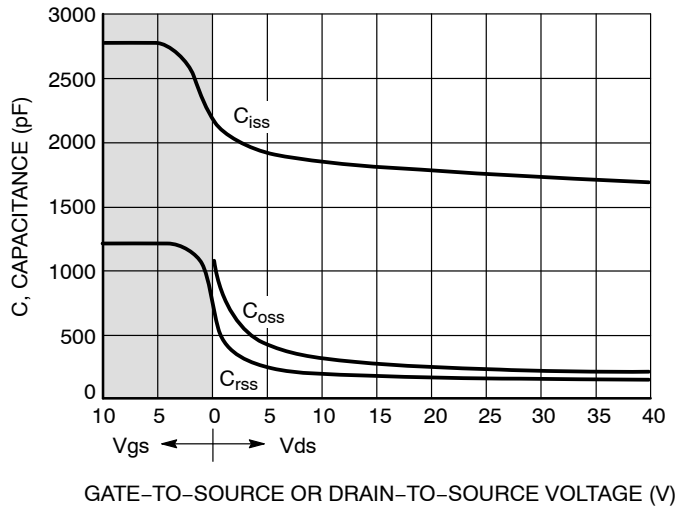


Figure 11. NTD5805N Capacitance Curves

Since most of the MOSFETs datasheet are without Capacitance-vs- $V_{GS}$  curve (shaded part of the Figure 11), estimation will have to be made based on the available

information. The missing Capacitance-vs- $V_{GS}$  curves will concern region B and region C.

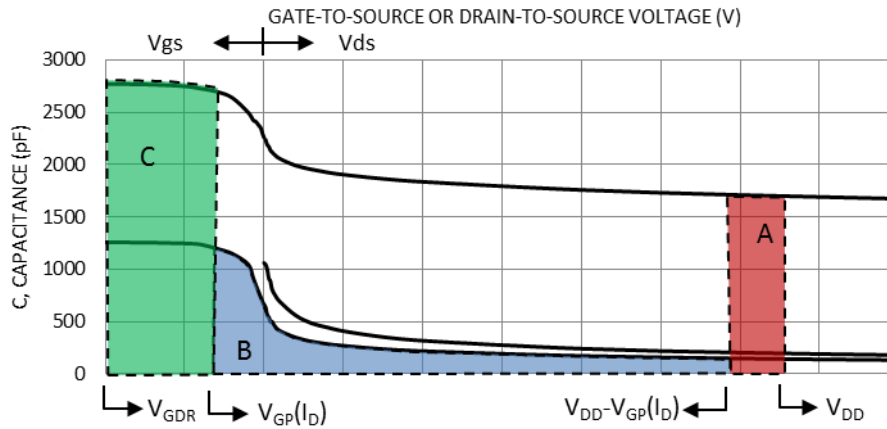


Figure 12. Circuit Parameters Effects

For region B, we can assume  $V_{GP}(I_D)$  are relative constant in modern trench MOSFET devices. Due to the high trench density (high transconductance), a large change in drain current,  $I_D$ , only resulted in small increase in gate plateau voltage,  $V_{GP}(I_D)$ .

For region C, we can estimate the gate charge after  $V_{GP}(I_D)$  due to its constant capacitance.

For example using 40 V NTMFS5C442NL,

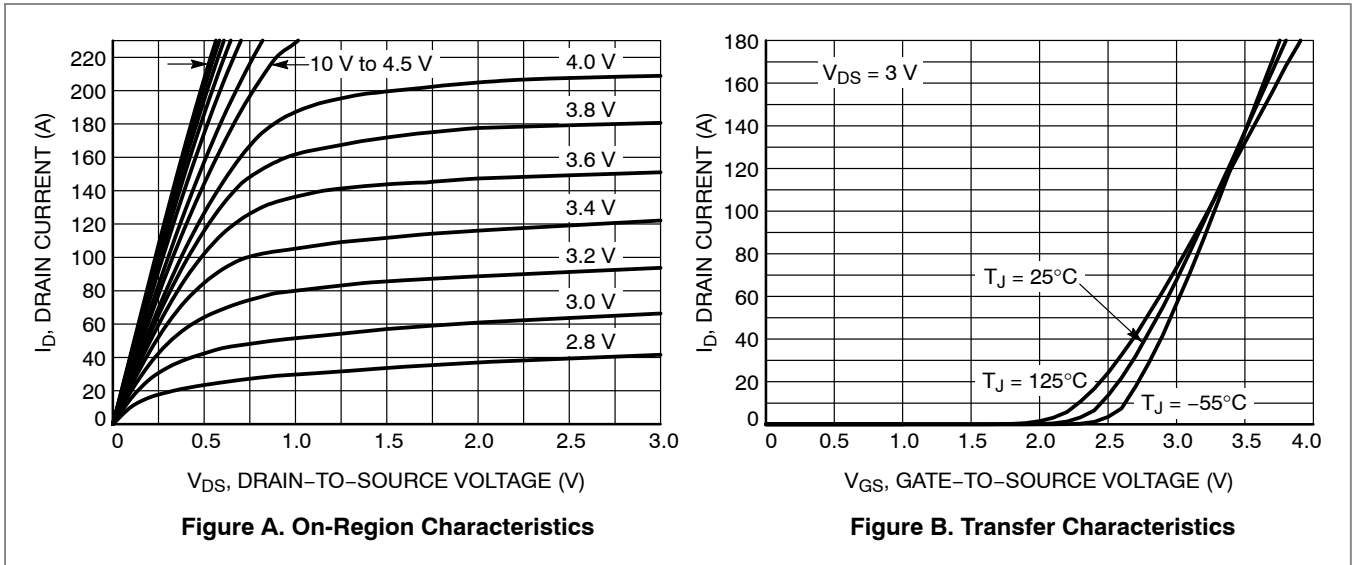


Figure 13. NTMFS5C442NL Datasheet Curves

From Figure A and B of NTMFS5C442NL, we can see that when Gate-to-Source voltage,  $V_{GS}$ , changed from 3.0 V to 3.2 V the drain current,  $I_D$ , increase by 30 A. Therefore, it implied gate plateau  $V_{GP}$  change by approximately 0.1 V

for every 15 A increase or decrease in drain current. We can conclude that  $V_{GP}$  for modern trench MOSFET devices are relative constant due to high transconductance.

Table 2. NTMFS5C442NL DATASHEET PARAMETERS

Parameter	Symbol	Test Condition	Min	Typ	Max	Unit
Total Gate Charge	$Q_{G(TOT)}$	$V_{GS} = 4.5\text{ V}, V_{DS} = 32\text{ V}, I_D = 50\text{ A}$	-	23	-	nC
Total Gate Charge	$Q_{G(TOT)}$	$V_{GS} = 10\text{ V}, V_{DS} = 32\text{ V}, I_D = 50\text{ A}$	-	50	-	
Threshold Gate Charge	$Q_{G(TH)}$	$V_{GS} = 4.5\text{ V}, V_{DS} = 32\text{ V}, I_D = 50\text{ A}$	-	5.0	-	
Gate-to-Source Charge	$Q_{GS}$		-	9.8	-	
Gate-to-Drain Charge	$Q_{GD}$		-	6.7	-	
Plateau Voltage	$V_{GP}$		-	3.1	-	V

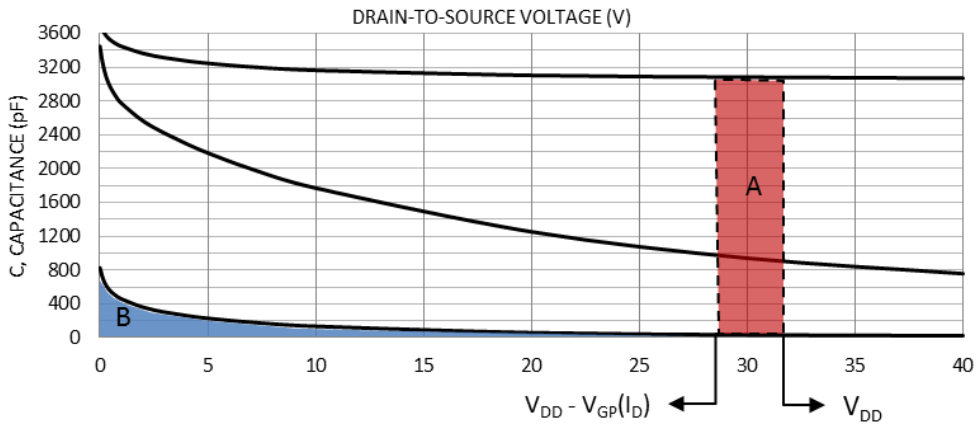


Figure 14. NTMFS5C442NL Capacitance Curves with Datasheet Test Conditions

## AND9083/D

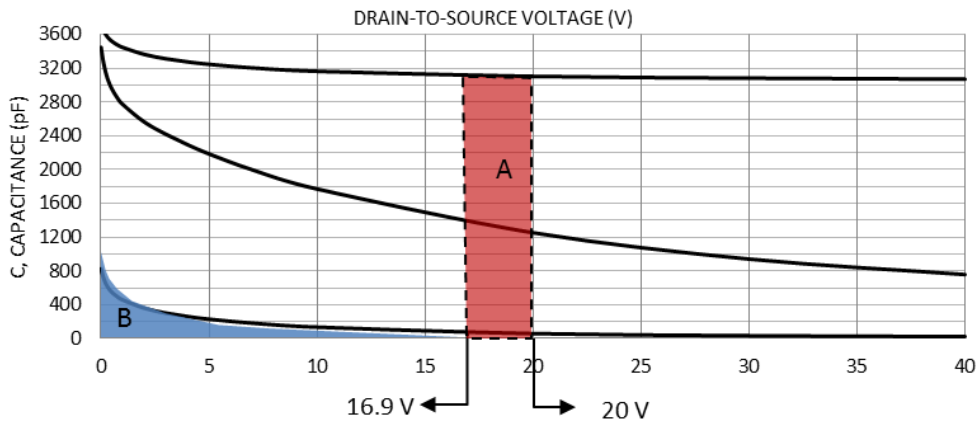
Region A =  $Q_{GS} = 9.8 \text{ nC}$  (estimated from curve =  $3.1 \text{ V} * 3100 \text{ pF} = 9.6 \text{ nC}$ )

Region B =  $Q_{GD} = 6.7 \text{ nC}$

Region C =  $Q_{GTOT} - Q_{GS} - Q_{GD} = 33.5 \text{ nC}$

### Calculate for Different Test Conditions

For example at  $V_{GS} = 6 \text{ V}$ ,  $V_{DS} = 20 \text{ V}$ ,  $I_D = 20 \text{ A}$ :

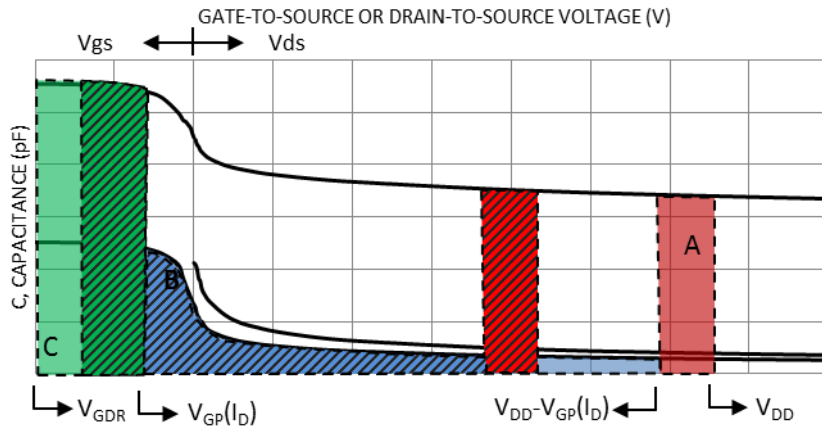


**Figure 15. NTMFS5C442NL Capacitance Curves with New Test Conditions**

Region A =  $3.1 \text{ V} * 3100 \text{ pF} = 9.6 \text{ nC}$

Region B =  $6.7 \text{ nC} - (12 \text{ V} * 100 \text{ pF}) = 5.5 \text{ nC}$

Region C =  $33.5 \text{ nC} / (10 \text{ V} - 3.1 \text{ V}) * (6 \text{ V} - 3.1 \text{ V}) = 14.1 \text{ nC}$



**Figure 16. Graphic Representation of Change in Above NTMFS5C442NL Estimation**



## AND9083/D

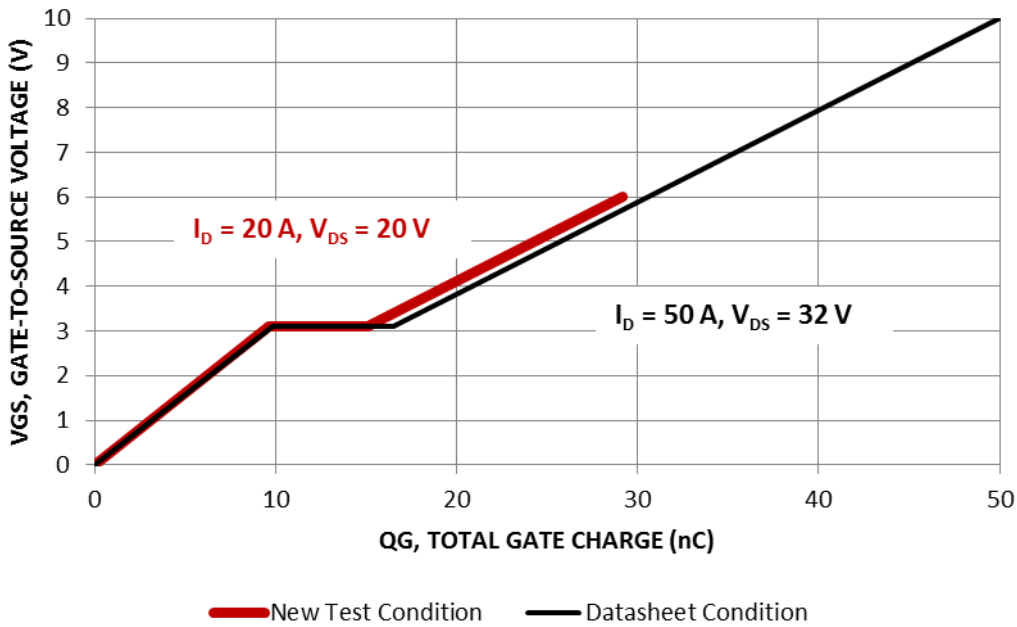



Figure 17. Gate Charge Comparison between Test Conditions

The change in gate charge can be seen in Figure 16 with new test condition in shaded regions.

## REFERENCES

- [1] ON Semiconductor, “Power MOSFET 40 V NTD5805N Datasheet”, [http://www.onsemi.com/pub\\_link/Collateral/NTD5805N-D.PDF](http://www.onsemi.com/pub_link/Collateral/NTD5805N-D.PDF)
- [2] ON Semiconductor, “MOSFET Transient Junction Temperature Under Repetitive UIS/Short-Circuit Conditions”, [http://www.onsemi.com/pub\\_link/Collateral/AND9042-D.PDF](http://www.onsemi.com/pub_link/Collateral/AND9042-D.PDF)
- [3] ON Semiconductor, “Power MOSFET 40 V NTMFS5C442NL Datasheet”, [http://www.onsemi.com/pub\\_link/Collateral/NTMFS5C442NL-D.PDF](http://www.onsemi.com/pub_link/Collateral/NTMFS5C442NL-D.PDF)

ON Semiconductor and the  are registered trademarks of Semiconductor Components Industries, LLC (SCILLC) or its subsidiaries in the United States and/or other countries. SCILLC owns the rights to a number of patents, trademarks, copyrights, trade secrets, and other intellectual property. A listing of SCILLC's product/patent coverage may be accessed at [www.onsemi.com/site/pdf/Patent-Marking.pdf](http://www.onsemi.com/site/pdf/Patent-Marking.pdf). SCILLC reserves the right to make changes without further notice to any products herein. SCILLC makes no warranty, representation or guarantee regarding the suitability of its products for any particular purpose, nor does SCILLC assume any liability arising out of the application or use of any product or circuit, and specifically disclaims any and all liability, including without limitation special, consequential or incidental damages. "Typical" parameters which may be provided in SCILLC data sheets and/or specifications can and do vary in different applications and actual performance may vary over time. All operating parameters, including "Typicals" must be validated for each customer application by customer's technical experts. SCILLC does not convey any license under its patent rights nor the rights of others. SCILLC products are not designed, intended, or authorized for use as components in systems intended for surgical implant into the body, or other applications intended to support or sustain life, or for any other application in which the failure of the SCILLC product could create a situation where personal injury or death may occur. Should Buyer purchase or use SCILLC products for any such unintended or unauthorized application, Buyer shall indemnify and hold SCILLC and its officers, employees, subsidiaries, affiliates, and distributors harmless against all claims, costs, damages, and expenses, and reasonable attorney fees arising out of, directly or indirectly, any claim of personal injury or death associated with such unintended or unauthorized use, even if such claim alleges that SCILLC was negligent regarding the design or manufacture of the part. SCILLC is an Equal Opportunity/Affirmative Action Employer. This literature is subject to all applicable copyright laws and is not for resale in any manner.

## PUBLICATION ORDERING INFORMATION

**LITERATURE FULFILLMENT:**  
Literature Distribution Center for ON Semiconductor  
19521 E. 32nd Pkwy, Aurora, Colorado 80011 USA  
**Phone:** 303-675-2175 or 800-344-3860 Toll Free USA/Canada  
**Fax:** 303-675-2176 or 800-344-3867 Toll Free USA/Canada  
**Email:** [orderlit@onsemi.com](mailto:orderlit@onsemi.com)

**N. American Technical Support:** 800-282-9855 Toll Free  
USA/Canada  
**Europe, Middle East and Africa Technical Support:**  
Phone: 421 33 790 2910  
**Japan Customer Focus Center**  
Phone: 81-3-5817-1050

**ON Semiconductor Website:** [www.onsemi.com](http://www.onsemi.com)  
**Order Literature:** <http://www.onsemi.com/orderlit>  
For additional information, please contact your local Sales Representative