

# ON Semiconductor

## Is Now

# onsemi™

To learn more about onsemi™, please visit our website at  
[www.onsemi.com](http://www.onsemi.com)

---

**onsemi** and **onsemi** and other names, marks, and brands are registered and/or common law trademarks of Semiconductor Components Industries, LLC dba "**onsemi**" or its affiliates and/or subsidiaries in the United States and/or other countries. **onsemi** owns the rights to a number of patents, trademarks, copyrights, trade secrets, and other intellectual property. A listing of **onsemi** product/patent coverage may be accessed at [www.onsemi.com/site/pdf/Patent-Marking.pdf](http://www.onsemi.com/site/pdf/Patent-Marking.pdf). **onsemi** reserves the right to make changes at any time to any products or information herein, without notice. The information herein is provided "as-is" and **onsemi** makes no warranty, representation or guarantee regarding the accuracy of the information, product features, availability, functionality, or suitability of its products for any particular purpose, nor does **onsemi** assume any liability arising out of the application or use of any product or circuit, and specifically disclaims any and all liability, including without limitation special, consequential or incidental damages. Buyer is responsible for its products and applications using **onsemi** products, including compliance with all laws, regulations and safety requirements or standards, regardless of any support or applications information provided by **onsemi**. "Typical" parameters which may be provided in **onsemi** data sheets and/or specifications can and do vary in different applications and actual performance may vary over time. All operating parameters, including "Typicals" must be validated for each customer application by customer's technical experts. **onsemi** does not convey any license under any of its intellectual property rights nor the rights of others. **onsemi** products are not designed, intended, or authorized for use as a critical component in life support systems or any FDA Class 3 medical devices or medical devices with a same or similar classification in a foreign jurisdiction or any devices intended for implantation in the human body. Should Buyer purchase or use **onsemi** products for any such unintended or unauthorized application, Buyer shall indemnify and hold **onsemi** and its officers, employees, subsidiaries, affiliates, and distributors harmless against all claims, costs, damages, and expenses, and reasonable attorney fees arising out of, directly or indirectly, any claim of personal injury or death associated with such unintended or unauthorized use, even if such claim alleges that **onsemi** was negligent regarding the design or manufacture of the part. **onsemi** is an Equal Opportunity/Affirmative Action Employer. This literature is subject to all applicable copyright laws and is not for resale in any manner. Other names and brands may be claimed as the property of others.



ON Semiconductor®

<http://onsemi.com>

## High Resolution Digital Dimmer

### APPLICATION NOTE

#### INTRODUCTION

##### Phase Control with Thyristors

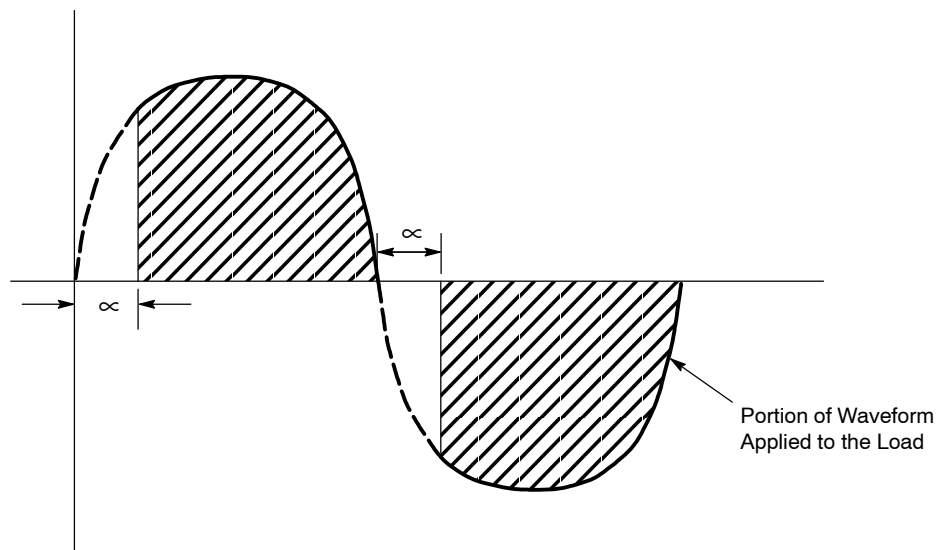
An effective and widely used method of controlling the average power to a load through a triac is by phase control. Phase control is a method of utilizing the triac to apply the ac supply to the load for a controlled fraction of each cycle. In this mode of operation, the triac is held in an off or open condition at a time in the half cycle determined by the control circuitry. In the on condition, the circuit current is limited only by the load i.e., the entire line voltage (less the forward drop of the triac) is applied to the load.

As one might expect, in spite of its usefulness, phase control has some disadvantages. The main disadvantage in

using phase control in triac applications is the generation of electromagnetic interference (EMI). Each time the triac is triggered the load current rises from zero to the load limited current value in a very short time. The resulting di/dt generates a wide spectrum of noise that may interfere with the operation of nearby electronic equipment unless proper filtering is used.

The following figure shows the function of the phase control.

Phase Control of AC Waveform



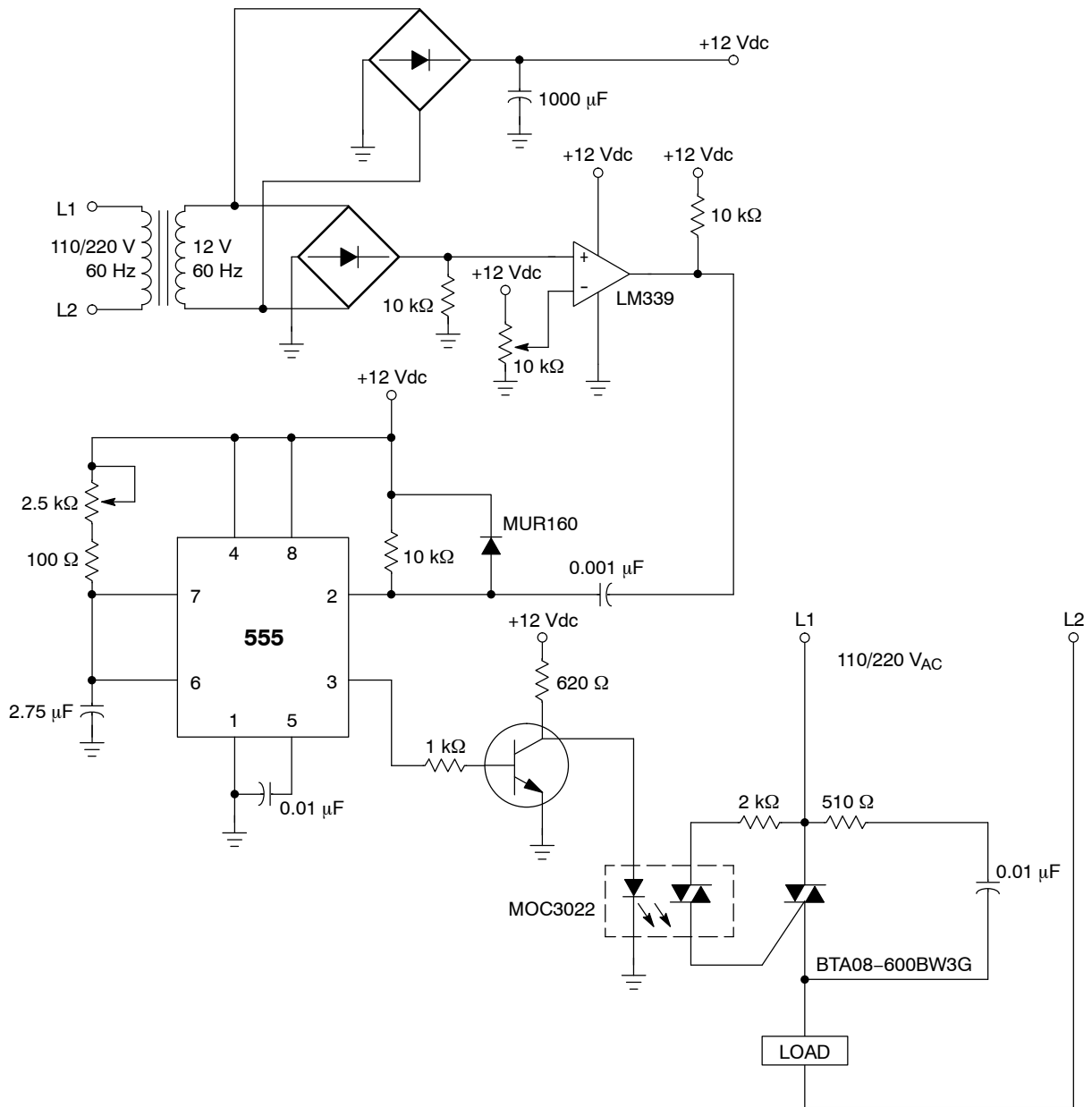
The above figure illustrates the concept of the phase control. During the first portion of each half cycle of the ac sine wave, an electronic switch is opened to prevent the current flow. At some specified phase angle (Alpha), this switch is closed to allow the full line voltage to be applied

to the load for the remainder of that half cycle. Varying Alpha will control the portion of the total sine wave that is applied to the load (shaded area), and thereby regulate the power flow to the load.

# AND8011/D

The following schematic diagram shows a digital dimmer with phase control from 10% to 95% of the ac sine wave.

## DIGITAL DIMMER



## AND8011/D

In the previous diagram, the operational amplifier (LM339) is performing a zero crossing function, and due to this, the integrated circuit (555) is being activated each time a zero crossing condition occurs. Therefore, once this integrated circuit (555) is activated (due to a zero crossing condition), it will wait a short delay time before it activates the transistor and in turn the triac BTA08–600BW3G. Due to this delay time, the triac BTA08–600BW3G will be activated at different points (phase angles) of each half-cycle of the ac sine wave, so the load is going to receive only a portion of the current waveform which is determined for the kind of delay time set. This delay time is selected by the adjustable resistor, in this example, 2.5 k $\Omega$ . It is able to control almost 100% of the complete ac sine wave.

On the other hand, the kind of triac to be used in the dimmer circuit is determined by the load characteristics taking into consideration the current, voltage, power, and its physical characteristics (inductive or resistive load). Therefore, it is very important to select the proper triac according to the load requirements.

In conclusion, the Digital Dimmer described in this application note offers a very reliable control phase (from 10% to 95% of the ac sine wave). It can be a very useful and inexpensive option for lighting applications or one phase motor speed controls or any other kind of application circuits where a reliable control phase is needed. Nevertheless, it is important to mention that the main disadvantage of using phase control in the application circuits is the generation of electromagnetic interference (EMI). Therefore, proper filtering needs to be used in order to eliminate the EMI phenomena, otherwise the noise would interfere with the operation of nearby electronic equipment. Another factor that is important to take into consideration, is extreme environmental temperatures could cause poor operation of the dimmer and thus the wrong phase control for the load. Therefore, it is necessary that the designer determine under what conditions would the dimmer need to operate in order to make the proper calculations of the electronic devices according to those needs.

**ON Semiconductor** and **ON** are registered trademarks of Semiconductor Components Industries, LLC (SCILLC). SCILLC reserves the right to make changes without further notice to any products herein. SCILLC makes no warranty, representation or guarantee regarding the suitability of its products for any particular purpose, nor does SCILLC assume any liability arising out of the application or use of any product or circuit, and specifically disclaims any and all liability, including without limitation special, consequential or incidental damages. "Typical" parameters which may be provided in SCILLC data sheets and/or specifications can and do vary in different applications and actual performance may vary over time. All operating parameters, including "Typicals" must be validated for each customer application by customer's technical experts. SCILLC does not convey any license under its patent rights nor the rights of others. SCILLC products are not designed, intended, or authorized for use as components in systems intended for surgical implant into the body, or other applications intended to support or sustain life, or for any other application in which the failure of the SCILLC product could create a situation where personal injury or death may occur. Should Buyer purchase or use SCILLC products for any such unintended or unauthorized application, Buyer shall indemnify and hold SCILLC and its officers, employees, subsidiaries, affiliates, and distributors harmless against all claims, costs, damages, and expenses, and reasonable attorney fees arising out of, directly or indirectly, any claim of personal injury or death associated with such unintended or unauthorized use, even if such claim alleges that SCILLC was negligent regarding the design or manufacture of the part. SCILLC is an Equal Opportunity/Affirmative Action Employer. This literature is subject to all applicable copyright laws and is not for resale in any manner.

### PUBLICATION ORDERING INFORMATION

#### LITERATURE FULFILLMENT:

Literature Distribution Center for ON Semiconductor  
P.O. Box 5163, Denver, Colorado 80217 USA  
**Phone:** 303-675-2175 or 800-344-3860 Toll Free USA/Canada  
**Fax:** 303-675-2176 or 800-344-3867 Toll Free USA/Canada  
**Email:** [orderlit@onsemi.com](mailto:orderlit@onsemi.com)

**N. American Technical Support:** 800-282-9855 Toll Free  
USA/Canada  
**Europe, Middle East and Africa Technical Support:**  
Phone: 421 33 790 2910  
**Japan Customer Focus Center**  
Phone: 81-3-5773-3850

**ON Semiconductor Website:** [www.onsemi.com](http://www.onsemi.com)

**Order Literature:** <http://www.onsemi.com/orderlit>

For additional information, please contact your local Sales Representative