



PRODUCT BULLETIN # 16967

Generic Copy

Issue Date: 24-Jan-2013

TITLE: SPI EEPROM Products Timing Exception

PROPOSED FIRST SHIP DATE: 24-Jan-2013

AFFECTED CHANGE CATEGORY(S): N/A

FOR ANY QUESTIONS CONCERNING THIS NOTIFICATION:

Contact your local ON Semiconductor sales office or <denisa.stefan@onsemi.com>

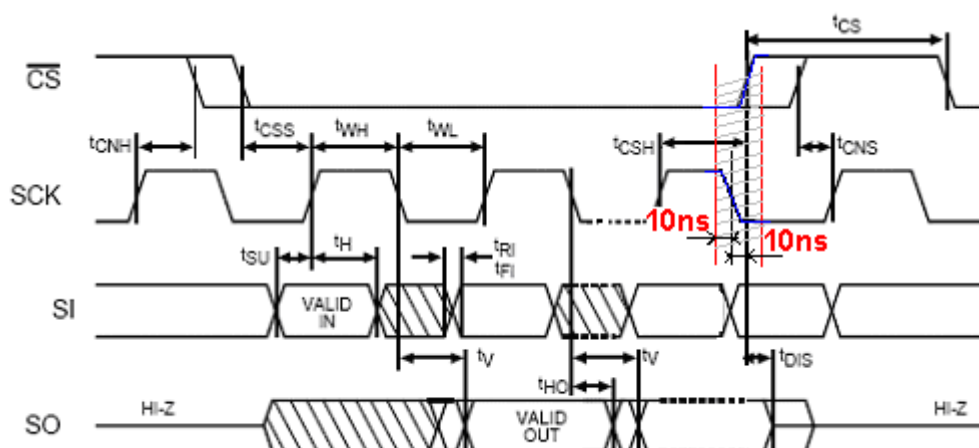
NOTIFICATION TYPE:

ON Semiconductor considers this change approved unless specific conditions of acceptance are provided in writing. To do so, contact <quality@onsemi.com>.

DESCRIPTION AND PURPOSE:

This bulletin is to inform customers that SPI EEPROM products with root names CAT25010, CAT25020, CAT25040, CAT25080, CAT25160 & CAT25640 using the more recent Gresham die (as opposed to earlier OKI die) as announced in PCN #16504, #16741, exhibit a timing exception that needs to be taken into consideration in the design of the timing set.

The timing exception refers to the t_{CSH} parameter in the context of the WREN instruction, where t_{CSH} is the delay from the positive Clock (SCK) transition to the positive CS transition (as shown below). The WREN instruction will not be executed (i.e. Write will not be enabled) – if the positive CS transition occurs within fewer than 10 ns either before or after the negative SCK transition:



**PRODUCT BULLETIN #16967**

Since this timing exception does not apply to OKI sourced parts, users switching from OKI to Gresham are urged to validate application compatibility – before deploying Gresham parts into production.

If issues are observed, please contact ON Semiconductor at the above contact point for resolution.

List of affected General Parts:

Part ID
CAT25010HU4I-GT3
CAT25010VI-GT3
CAT25010YI-GT3
CAT25020VI-GT3JN
CAT25040LI-G
CAT25040VE-G
CAT25040VI-GT3
CAT25080HU4I-GT3
CAT25080VP2I-GT3
CAT25160HU2I-GT3
CAT25160VP2I-GT3
CAT25160LI-G
CAT25160VE-GT3
CAT25160VI-GT3
CAT25640HU4I-GT3
CAT25640LI-G
CAT25640VI-G
CAT25640VI-GT3
CAT25640VP2I-GT3
CAT25640YI-G