



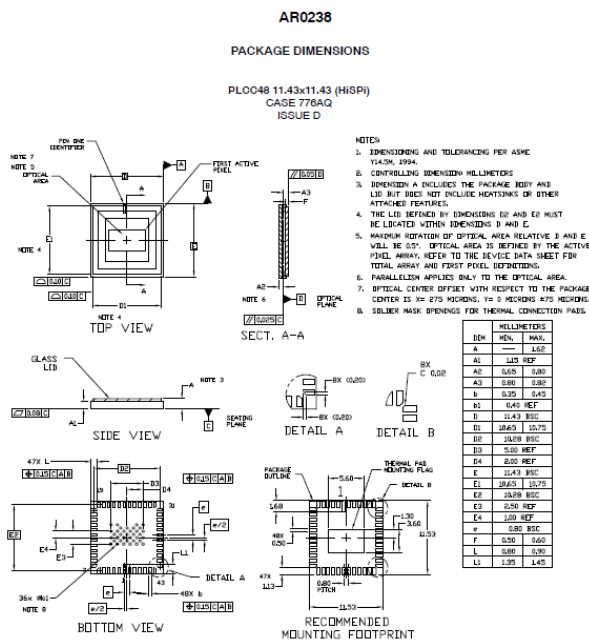
<b>Title of Change:</b>	AR0238 Datasheet Update
<b>Effective date:</b>	12 Feb 2020
<b>Contact information:</b>	Contact your local ON Semiconductor Sales Office or Sonya.Yip@onsemi.com
<b>Type of notification:</b>	This Product Bulletin is for notification purposes only. ON Semiconductor will proceed with implementation of this change upon publication of this Product Bulletin.
<b>Change Category:</b>	Documentation Change
<b>Change Sub-Category(s):</b>	Datasheet/Product Doc change
<b>Sites Affected:</b>	
<b>ON Semiconductor Sites</b>	<b>External Foundry/Subcon Sites</b>
None	None

### Description and Purpose:

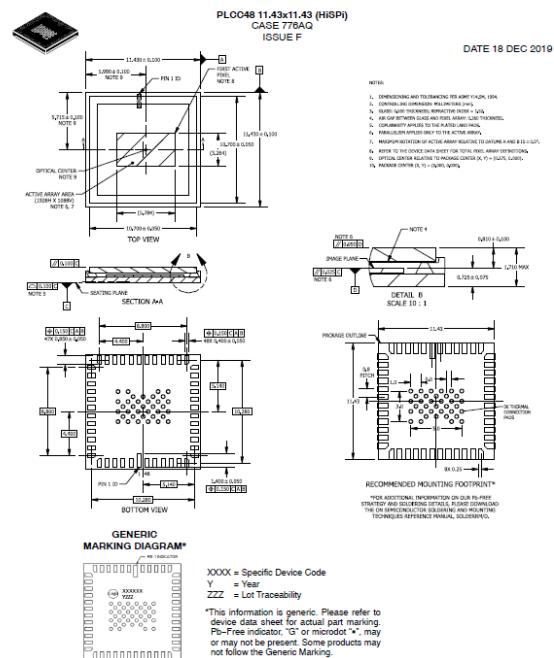
Updated case outlines (package drawings) in the AR0238CS datasheet with the latest revisions.

#### 1. Updated CASE 776AQ

##### Old Revision D



##### New Revision F





## 2. Updated CASE 776AS

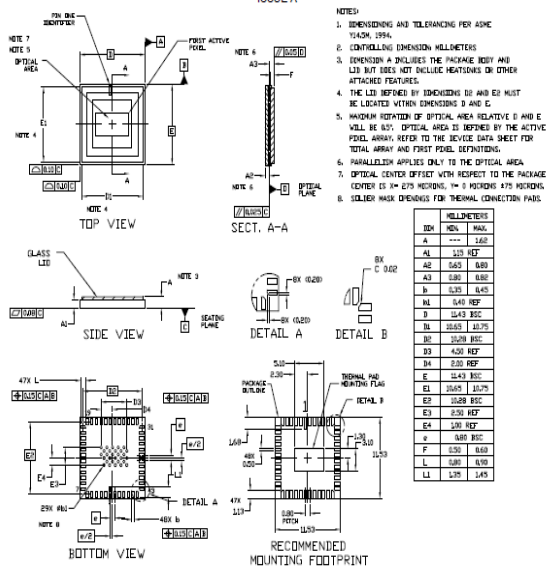
### Old Revision A

### New Revision D

AR0238

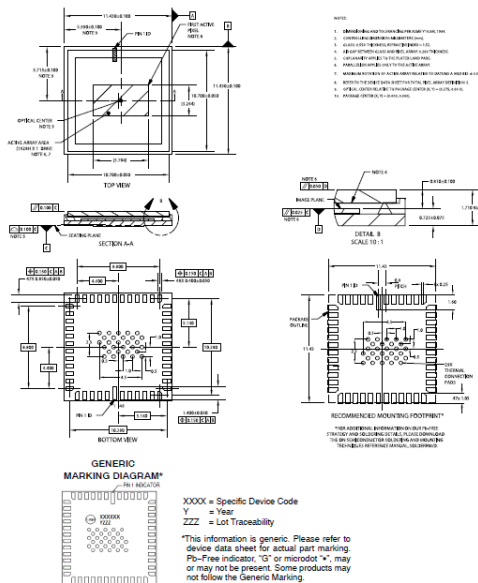
PACKAGE DIMENSIONS

PL0048 11.43x11.43 (Parallel)  
CASE 776AS  
ISSUE A



PL0048 11.43x11.43 (Parallel)  
CASE 776AS  
ISSUE D

DATE 18 DEC 2019



### List of Affected Standard Parts:

**Note:** Only the standard (off the shelf) part numbers are listed in the parts list. Any custom parts affected by this PCN are shown in the customer specific PCN addendum in the PCN email notification, or on the [PCN Customized Portal](#).

AR0238CSC12SHRA0-DP1	AR0238CSC12SHRA0-DR	AR0238CSC12SHRA0-DP
AR0238CSC12SPRA0-DR	AR0238CSC12SPRA0-DR1	AR0238CSC12SUD20
AR0238IRSH12SUD20		