

Title of Change:	To update the package dimension to case outline 418BK on datasheet of RUR1S1560S9A	
Effective date:	12 Oct 2021	
Contact information:	Contact your local onsemi Sales Office or Charles.Jiang@onsemi.com	
Type of notification:	This Product Bulletin is for notification purposes only. onsemi will proceed with implementation of this change upon publication of this Product Bulletin.	
Change Category:	To correct the case outline on datasheet	
Change Sub-Category(s):	Datasheet/Product Doc change	
Sites Affected:		
onsemi Sites	External Foundry/Subcon Sites	
None	None	

Description and Purpose:

This product bulletin is released to reflect the correct case outline from 418AJ to 418BK for RUR1S1560S9A, due to an unforeseen error found in the datasheet.

There is no physical dimension change to the product, thus, the change will not impact form, fit, or function of product(s)

Before:

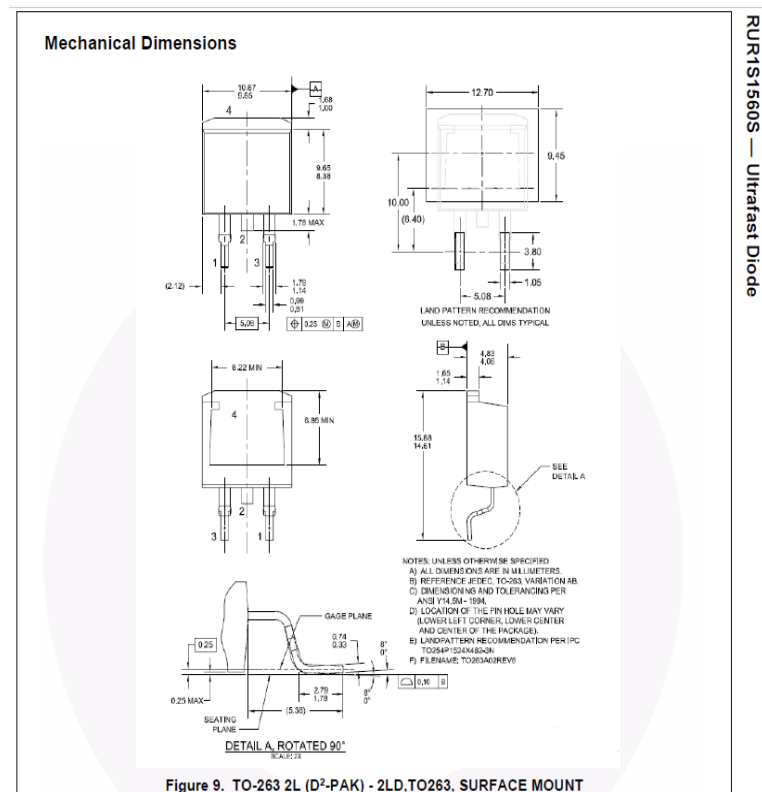
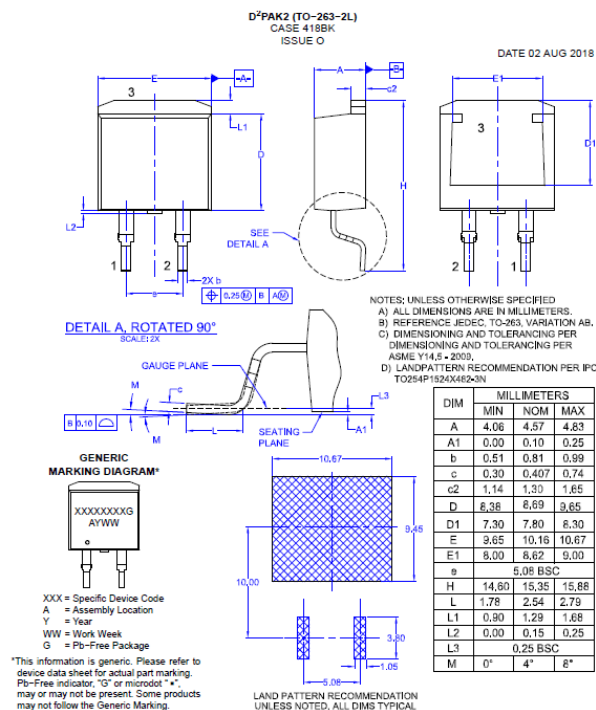


Figure 9. TO-263 2L (D²-PAK) - 2LD, TO263, SURFACE MOUNT

After:

MECHANICAL CASE OUTLINE

ON Semiconductor® 

DIM	MILLIMETERS		
	MIN	NOM	MAX
A	4.06	4.57	4.83
A1	0.00	0.10	0.25
b	0.51	0.81	0.99
c	0.30	0.407	0.74
c2	1.14	1.30	1.65
D	6.36	6.69	3.65
D1	7.30	7.80	8.30
E	3.65	10.16	10.67
E1	8.00	8.62	9.00
e		5.08 BSC	
H	14.60	15.35	15.85
L	1.78	2.54	2.79
L1	0.80	1.29	1.68
L2	0.00	0.15	0.25
L3		0.25 BSC	
M	0°	4°	8°

DOCUMENT NUMBER:	98AON93788G	Electronic versions are uncontrolled except when accessed directly from the Document Repository. Printed versions are uncontrolled except when stamped "CONTROLLED COPY" in red.
DESCRIPTION:	D ² PAK2 (TO-263-2L)	PAGE 1 OF 1

List of Affected Standard Parts:

Note: Only the standard (off the shelf) part numbers are listed in the parts list. Any custom parts affected by this PCN are shown in the customer specific PCN addendum in the PCN email notification, or on the **PCN Customized Portal**.

RUR1S1560S9A		
--------------	--	--