

# NB3H83905CDGEVB

## NB3H83905CDGEVB Evaluation Board User's Manual



ON Semiconductor®

<http://onsemi.com>

### EVAL BOARD USER'S MANUAL

#### Device Description

The NB3H83905CDG device is a 1.8 V, 2.5 V or 3.3 V VDD core Crystal input 1:6 LVTTTL/LVCMOS fanout buffer with outputs powered by flexible 1.8 V, 2.5 V, or 3.3 V supply (with  $VDD \geq VDDO$ ). The core inputs accept a fundamental Parallel Resonant crystal from 3 MHz to 40 MHz or Single Ended LVCMOS Clock from 3 MHz to 100 MHz. Core supply must be equal or greater voltage than the output supply. See datasheet NB3H83905C/D ([www.onsemi.com](http://www.onsemi.com)).

#### Evaluation Board Description

The NB3H83905CDGEVB Evaluation board is designed to provide a flexible and convenient platform to quickly program, evaluate and verify the performance and operation of the NB3H83905CDG SOIC-16 device under test. With the device removed, this NB3H83905CDGEVB Evaluation board is designed to accept a 16 Lead SOIC socket (M&M Specialties, Inc., 1-800-892-8760, [www.mmspec.com](http://www.mmspec.com), M&M #50-000-00112) to permit use as an insertion test fixture.

#### Board Features

- Crystal source mount, or external clock source (SMA) input. One 25 Mhz crystal is supplied.
- A SOIC-16 NB3H83905CDG device is solder mounted. The board may be adapted for insertion testing by removing the device and adding a 16 Lead SOIC socket (M&M #50-000-00112)
- Separate supply connectors for VDD, VDDO, SMAGND, and DUTGND (banana jacks and anvil clips)

#### Contents

Descriptions  
Board Features  
Board Layout Maps  
Test and Measurement Setup Procedures  
Appendix 1: Pin to Board Connection Information  
Appendix 2: Board Top and Bottom Layer Designs  
Appendix 3: Bill of Materials, Lamination Stackup

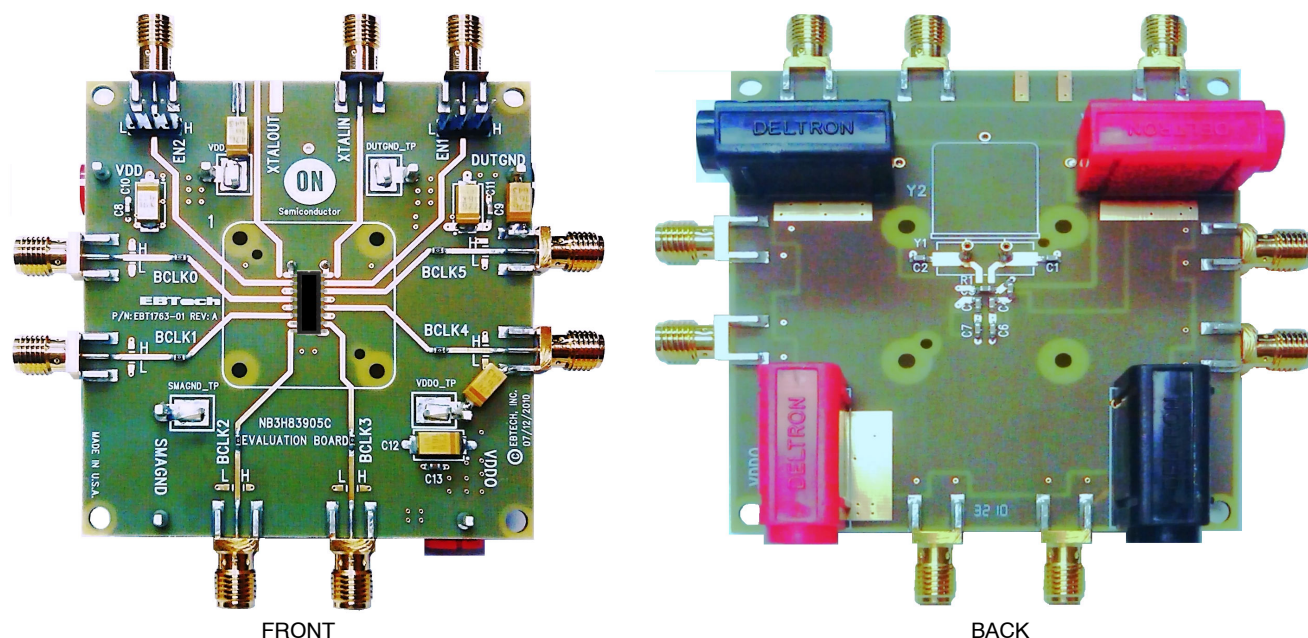
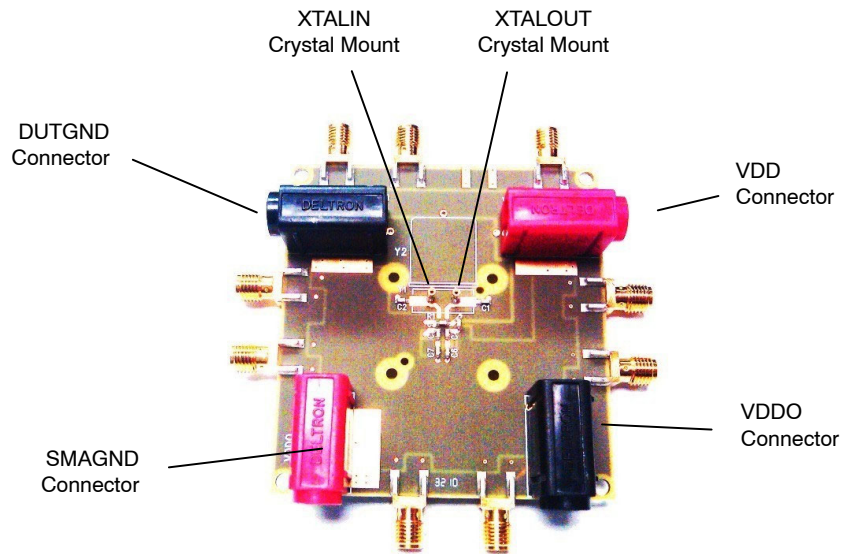
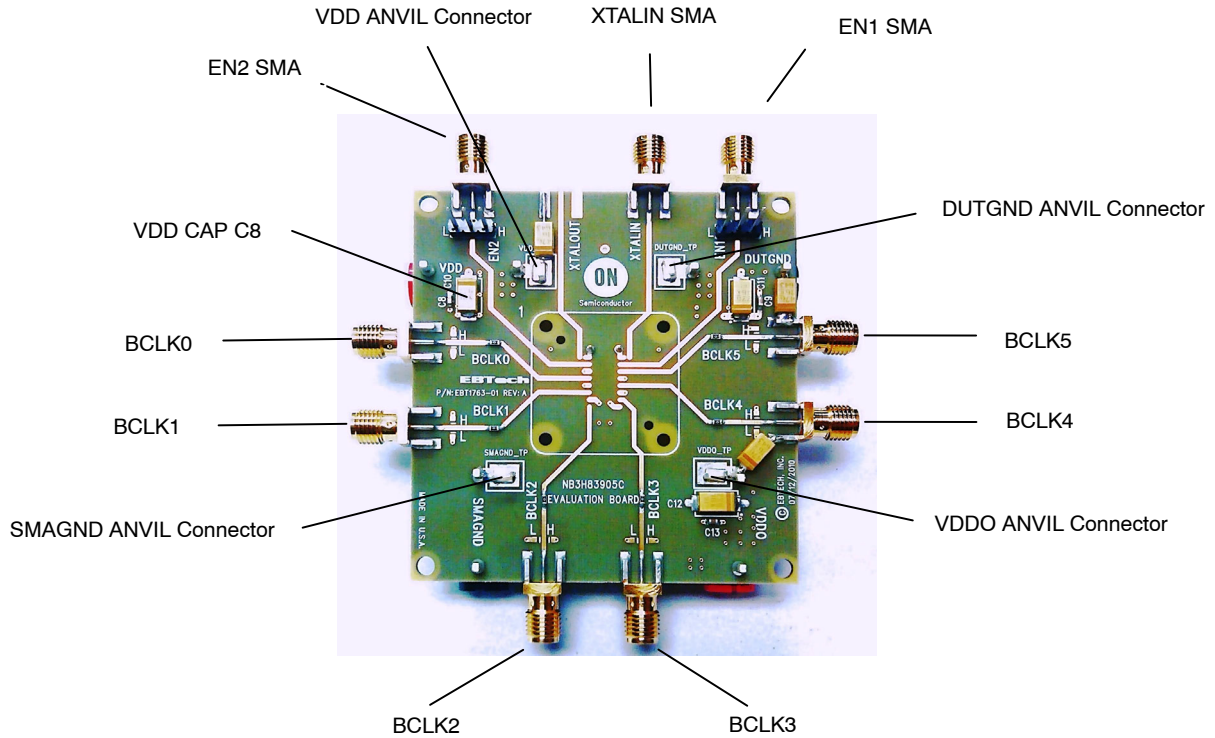


Figure 1. NB3H83905CDGEVB Evaluation Board

# NB3H83905CDGEVB

## Board Layout Maps



## TEST AND MEASUREMENT SET-UP AND PROCEDURE

### Step 1: Equipment

- 1.) Signal Generator: Agilent #33250A or HP8133 (or equivalent)
- 2.) Tektronix TDS8000 Oscilloscope
- 3.) Power Supply: Agilent #6624A or AG6626A DC (or equivalent)
- 4.) Digital Voltmeter: Agilent 34410A or 34401 (or equivalent)
- 5.) Matched Cables (> 20 GHz, SMA connectors): Storm or Semflex (or equivalent)
- 6.) Time Transition Converter: Agilent 14534 250 ps (or equivalent)
- 7.) Phase noise Analyzer: Agilent E5052B (or equivalent)

### Step 2: Lab Set-Up Procedure (Split Supplies into LOW impedance 50 Ohm equipment or probes)

1) **Test Supply Setup:** VDDO and GND Supplies may be centered on 0.0 V to permit direct connection to an Oscilloscope module (with 50 Ohm to GND) per Figure 4 and Table 1. Connect all board supplies using banana jack or clip anvil.

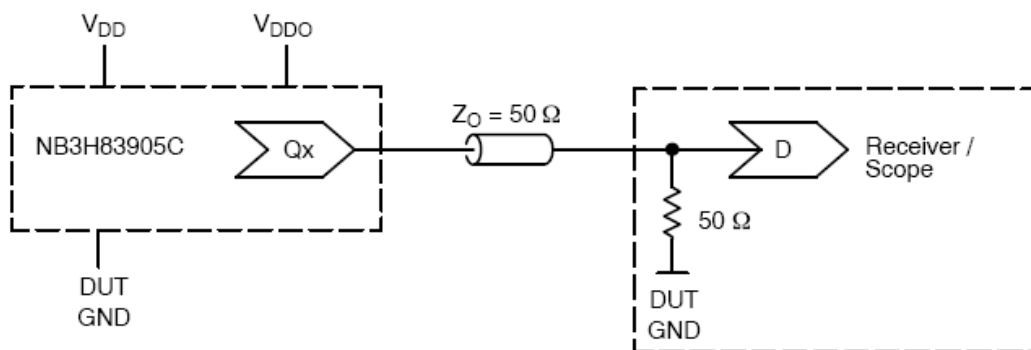


Figure 4. Typical Device Termination Setup and Termination Test Setup

Table 1. Test Voltages

Datasheet Spec Condition	TEST SETUP VDD	TEST SETUP VDDO	TEST SETUP DUT GND
VDD = VDDO = 3.135 V to 3.465 V (3.3 V Nom. $\pm 5\%$ )	1.56 to 1.73 V	1.56 to 1.73 V	-1.56 to -1.73 V
VDD = VDDO = 2.375 V to 2.625 V (2.5 V Nom. $\pm 5\%$ )	1.1875 to 1.3125 V	1.1875 to 1.3125 V	-1.1875 to -1.3125 V
VDD = VDDO = 1.6 V to 2.0 V (1.8 V Nom. $\pm 0.2$ V)	0.8 to 1.0 V	0.8 to 1.0 V	-0.8 to -1.0 V
VDD = 3.135 V to 3.465 V (3.3 V Nom.); VDDO = 2.375 V to 2.625 V (2.5 V Nom.)	1.955 to 2.1525 V	1.1875 to 1.3125 V	-1.1875 to -1.3125 V
VDD = 3.135 V to 3.465 V (3.3 V Nom.); VDDO = 1.6 V to 2.0 V (1.8 V Nom.)	2.335 to 2.465 V	0.8 to 1.0 V	-0.8 to -1.0 V
VDD = 2.375 V to 2.625 V (2.5 V Nom.); VDDO = 1.6 V to 2.0 V (1.8 V Nom.)	1.575 to 1.625	0.8 to 1.0 V	-0.8 to -1.0 V

### 2.) Inputs:

For a Single Ended operation, bridge the small gap in located at the device footprint outline in the trace line to the

SMA connector XTALIN. Use a LVCMOS Clock amplitude signal from 3 MHz to 100 MHz on the XTAL\_IN/CLK pin16. Note the levels must be shifted according to the

## NB3H83905CDGEVB

supply voltages. Transitions Edges should about 250 ps or use TTC, Time transition Convertor, such as Agilent 14534 (250 ps) or an equivalent. Do not drive XTALOUT. Termination of the signal generator may be needed with 50 Ohms to SMA ground.

For Crystal operation use a fundamental Parallel Resonant crystal (see Datasheet Table 3) from 3 MHz to 40 MHz across pins 1 and 16. The Crystal mount is located on the back of the board and permanently connected to the device inputs by traces. Crystal Load capacitance (C1 and C2) values should consider all parasitic capacitances. Datasheet Figure 1 shows the typical NB3H83905C device crystal interface using a parallel resonant crystal. The frequency accuracy can be fine tuned by adjusting the C1 and C2 values. For example, a parallel crystal with loading

capacitance  $C_L = 18$  pF would use  $C1 = 15$  pF and  $C2 = 15$  pF as initial values. These values may be adjusted to fine tune frequency accuracy. Increasing the C1 and C2 values will reduce the operational frequency.

Enable 1 and 2 (see Datasheet Table 2) levels must be shifted according to the supply voltages. Open default condition will force a HIGH (enabled) due to an internal pullup resistor to VCC.

### 3.) Outputs:

Connect LVC MOS outputs to the oscilloscope with matched cables. NOTE: THE READINGS OF THE OUTPUT VOLTAGE LEVELS WILL BE OFFSET. With this split supply, the device outputs will be parallel terminated by the oscilloscope (or frequency counter) input module's internal 50 Ohms to GND impedance.

## APPENDIX 1: DEVICE PIN TO BOARD CONNECTION INFORMATION (see current Datasheet)

**Table 2. Device Pins to Board Connection**

Device Pin	Board Connection	Name	I/O	Description
1		XTAL_OUT	Crystal Interface	Oscillator Output to drive Crystal
2		ENABLE 2	LVTTL / LVC MOS Input	Synchronous Enable Input for BCLK5 Output. Switches only when HIGH. Open default condition HIGH due to an internal pull-up resistor to VCC.
3, 7, 11	DUTGND or DUTGND_TP	GND	GND	GND Supply pins. All VDD and VDDO pins must be externally connected to power supply to guarantee proper operation.
4, 6, 8, 10, 12, 14	BCLK0, 1, 2, 3, 4, 5	BCLK0, 1, 2, 3, 4, 5	LVC MOS Outputs	Buffered Clock outputs
5, 13	VDDO	VDDO	POWER	Output Positive Supply pins. All VDD and VDDO pins must be externally connected to power supply to guarantee proper operation. Bypass with 0.01 $\mu$ F cap to GND.
9	VDD or VDD_TP	VDD	POWER	Output Positive Supply pins. All VDD and VDDO pins must be externally connected to power supply to guarantee proper operation. Bypass with 0.01 $\mu$ F cap to GND.
15	EN1	ENABLE 1	LVTTL / LVC MOS Input	Synchronous Enable Input for BCLK0/1/2/3/4 Output block. Switches only when HIGH. Open default condition HIGH due to an internal pullup resistor to VCC
16	XTALIN	XTAL_IN/CLK	Crystal Interface	Oscillator Input from Crystal. Single ended Clock Input.
	SMAGND or SMAGND_TP	SMAGND		SMA connectors GND. Should be connected equipment GND.

APPENDIX 2: BOARD TOP AND BOTTOM LAYER DESIGNS

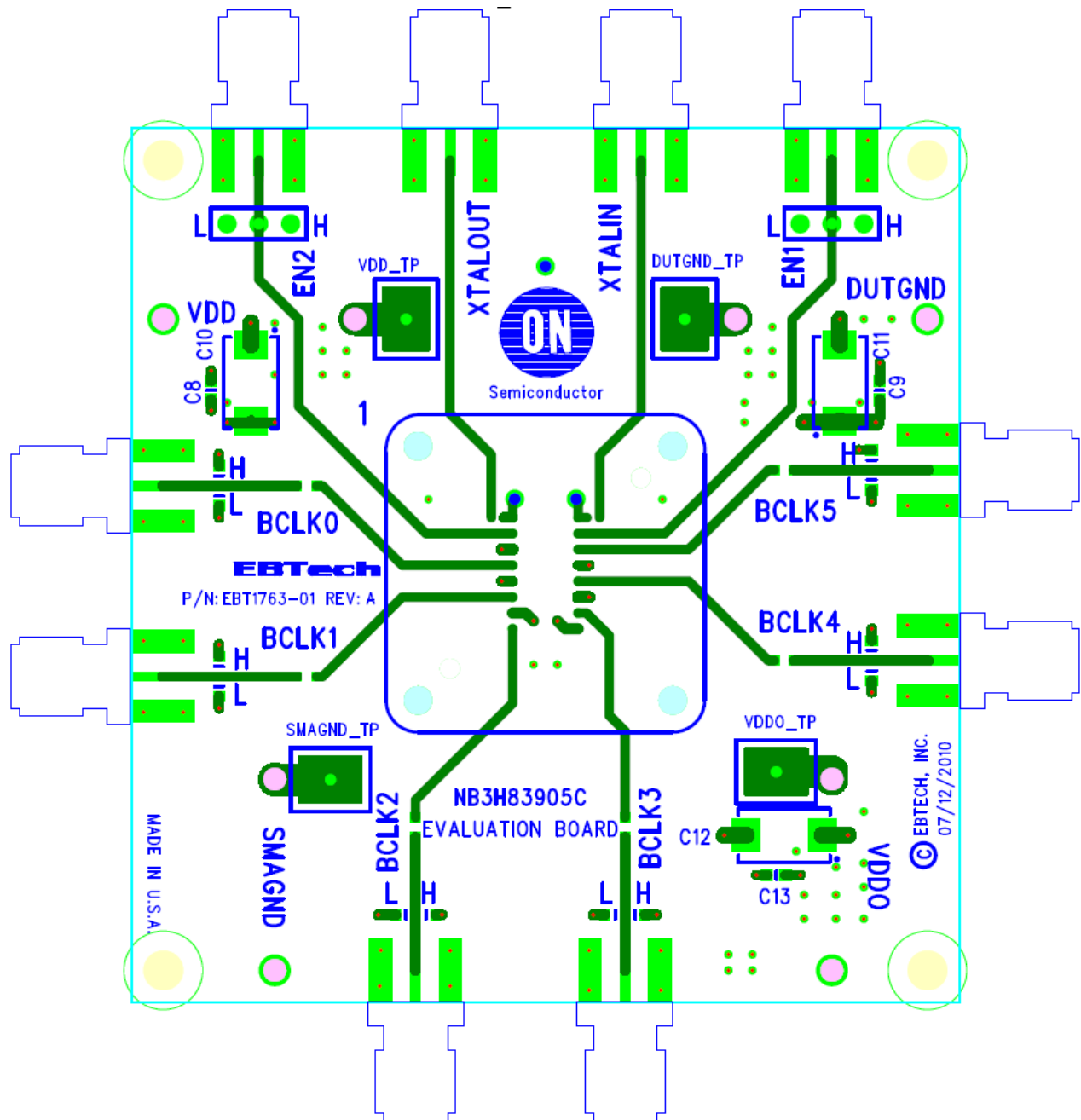


Figure 5. Top Layer Design

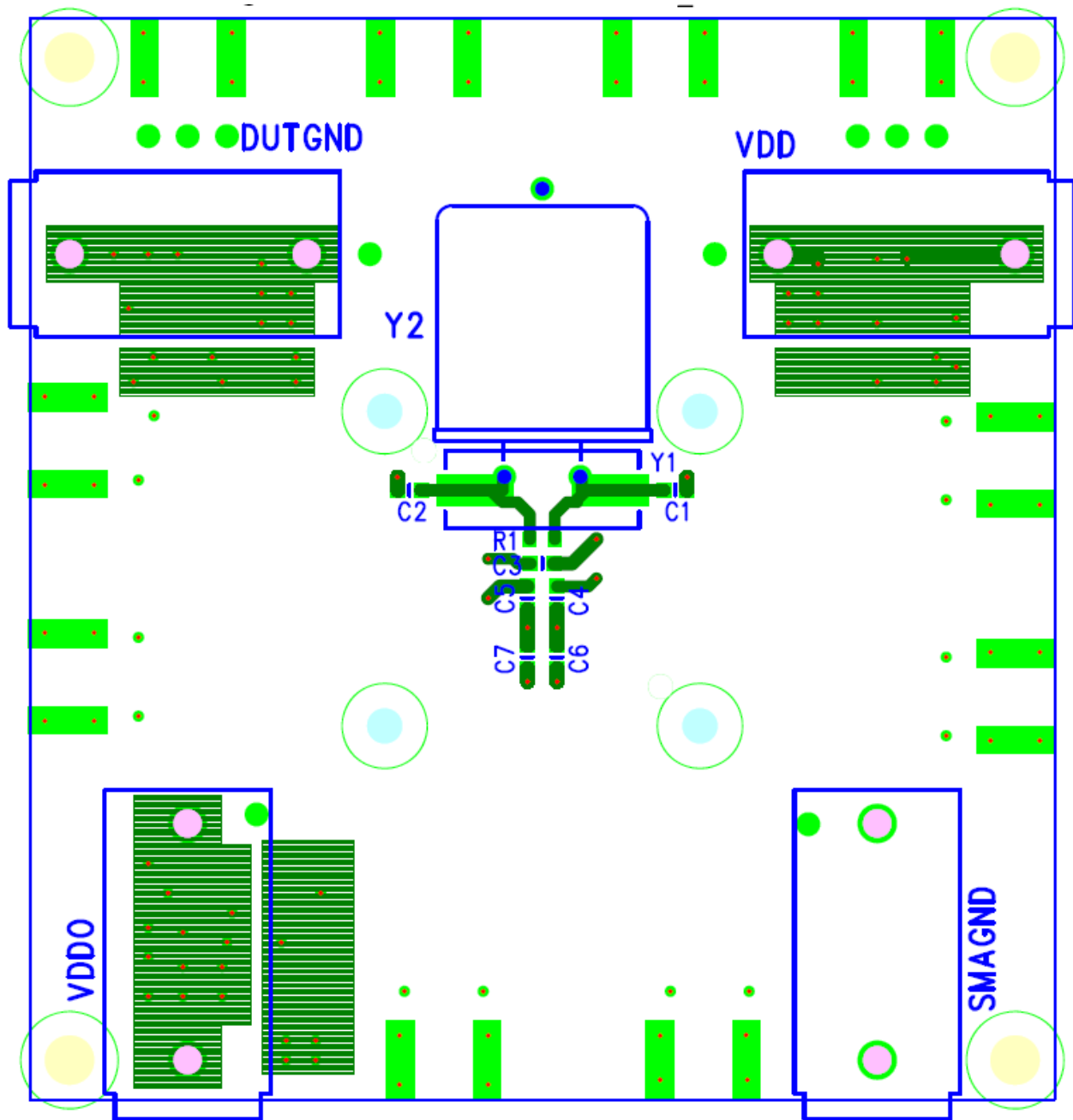


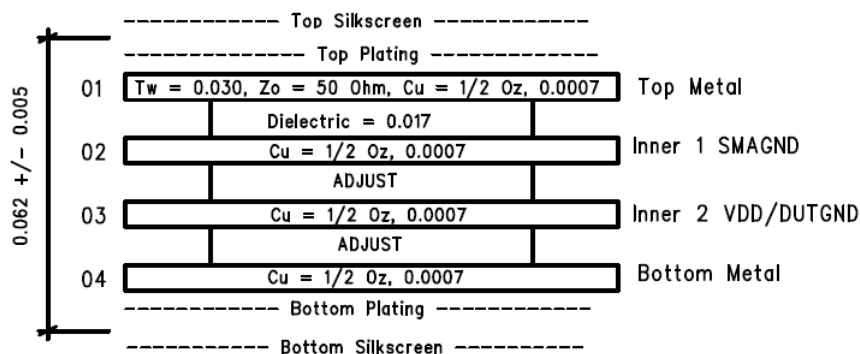
Figure 6. Bottom Layer Design

# NB3H83905CDGEVB

## APPENDIX 3: BILL OF MATERIALS, LAMINATION STACKUP, AND ASSEMBLY NOTES

Components	Mfr / Part No.	Description	Supplier / Part Number	Qty
BANANA1 VDD, VDDO	Deltron / 579-0500	Connector, Banana Jack	Mouser / #164-6219	2
BANANA2 DUT GND, SMA GND	Deltron / 579-0500	Connector, Banana Jack, Deltron, Black #571-0500	Mouser / #164-6218	1
BANANA3 SMA GND	Deltron / 579-0500	Connector, Banana Jack, Deltron, Green #571-0500	Mouser / #164-7140	1
C4, C5, C6, C7, C8, C9	Kemet / C0805C104K5RACTU	Cap, Chip, 0.1 $\mu$ F, 0805, 50V, 10%	Digi-Key / 399-1170-1-ND	6
C10, C11	Kemet / T491D226K016AS	Cap, Chip, 22 $\mu$ F, 10%	Mouser / 80-T491D226K016AS	2
C1, C2	Kemet / C0805C150J1GACTU	Cap, Chip, 15 pF, 10%	Mouser / 80-C0805C150J1G	2
J1-J10	Johnson / #142-0711-821	PCB SMA Connector, SMA, Edge Mount	Mouser / 530-142-0711-821	2
JMP1, JMP2	SPC TECHNOLOGY / SPC20481	Header, Single Row, Pitch Spacing: 2.54 mm	Newark / 93K5734	2
Jumper Block Shunt	SPC TECHNOLOGY / SPC19808	Jumper, Pitch Spacing: 2.54 mm	Newark / 84K8570	2
SOCKET (OPT.)	M&M	SOIC-16 Direct Contact		(1)
XTAL	Abracon / ABL-25.000MHZ-B2F	25 Mhz Through Hole AT Cut Fundamental Crystal	Newark / 13J1637	1
XTAL Pin	Mill-Max	crystal pin receptacle / connector	#0462-0-15-15-11-27-04-0	2
Rx	Bourns / CR0603-J/-000ELF	Resistor, Chip, 0 $\Omega$ , 0603, 1/10 W, 1%	Mouser/652-CR0603-J/-000ELF	6

### Lamination Stack



- 01 Top Metal
- 02 SMAGND
- 03 VDD / DUTGND
- 04 Bottom Metal

**onsemi**, **onsemi**, and other names, marks, and brands are registered and/or common law trademarks of Semiconductor Components Industries, LLC dba "**onsemi**" or its affiliates and/or subsidiaries in the United States and/or other countries. **onsemi** owns the rights to a number of patents, trademarks, copyrights, trade secrets, and other intellectual property. A listing of **onsemi**'s product/patent coverage may be accessed at [www.onsemi.com/site/pdf/Patent-Marking.pdf](http://www.onsemi.com/site/pdf/Patent-Marking.pdf). **onsemi** is an Equal Opportunity/Affirmative Action Employer. This literature is subject to all applicable copyright laws and is not for resale in any manner.

The evaluation board/kit (research and development board/kit) (hereinafter the "board") is not a finished product and is not available for sale to consumers. The board is only intended for research, development, demonstration and evaluation purposes and will only be used in laboratory/development areas by persons with an engineering/technical training and familiar with the risks associated with handling electrical/mechanical components, systems and subsystems. This person assumes full responsibility/liability for proper and safe handling. Any other use, resale or redistribution for any other purpose is strictly prohibited.

**THE BOARD IS PROVIDED BY ONSEMI TO YOU "AS IS" AND WITHOUT ANY REPRESENTATIONS OR WARRANTIES WHATSOEVER. WITHOUT LIMITING THE FOREGOING, ONSEMI (AND ITS LICENSORS/SUPPLIERS) HEREBY DISCLAIMS ANY AND ALL REPRESENTATIONS AND WARRANTIES IN RELATION TO THE BOARD, ANY MODIFICATIONS, OR THIS AGREEMENT, WHETHER EXPRESS, IMPLIED, STATUTORY OR OTHERWISE, INCLUDING WITHOUT LIMITATION ANY AND ALL REPRESENTATIONS AND WARRANTIES OF MERCHANTABILITY, FITNESS FOR A PARTICULAR PURPOSE, TITLE, NON-INFRINGEMENT, AND THOSE ARISING FROM A COURSE OF DEALING, TRADE USAGE, TRADE CUSTOM OR TRADE PRACTICE.**

**onsemi** reserves the right to make changes without further notice to any board.

You are responsible for determining whether the board will be suitable for your intended use or application or will achieve your intended results. Prior to using or distributing any systems that have been evaluated, designed or tested using the board, you agree to test and validate your design to confirm the functionality for your application. Any technical, applications or design information or advice, quality characterization, reliability data or other services provided by **onsemi** shall not constitute any representation or warranty by **onsemi**, and no additional obligations or liabilities shall arise from **onsemi** having provided such information or services.

**onsemi** products including the boards are not designed, intended, or authorized for use in life support systems, or any FDA Class 3 medical devices or medical devices with a similar or equivalent classification in a foreign jurisdiction, or any devices intended for implantation in the human body. You agree to indemnify, defend and hold harmless **onsemi**, its directors, officers, employees, representatives, agents, subsidiaries, affiliates, distributors, and assigns, against any and all liabilities, losses, costs, damages, judgments, and expenses, arising out of any claim, demand, investigation, lawsuit, regulatory action or cause of action arising out of or associated with any unauthorized use, even if such claim alleges that **onsemi** was negligent regarding the design or manufacture of any products and/or the board.

This evaluation board/kit does not fall within the scope of the European Union directives regarding electromagnetic compatibility, restricted substances (RoHS), recycling (WEEE), FCC, CE or UL, and may not meet the technical requirements of these or other related directives.

**FCC WARNING** – This evaluation board/kit is intended for use for engineering development, demonstration, or evaluation purposes only and is not considered by **onsemi** to be a finished end product fit for general consumer use. It may generate, use, or radiate radio frequency energy and has not been tested for compliance with the limits of computing devices pursuant to part 15 of FCC rules, which are designed to provide reasonable protection against radio frequency interference. Operation of this equipment may cause interference with radio communications, in which case the user shall be responsible, at its expense, to take whatever measures may be required to correct this interference.

**onsemi** does not convey any license under its patent rights nor the rights of others.

**LIMITATIONS OF LIABILITY:** **onsemi** shall not be liable for any special, consequential, incidental, indirect or punitive damages, including, but not limited to the costs of requalification, delay, loss of profits or goodwill, arising out of or in connection with the board, even if **onsemi** is advised of the possibility of such damages. In no event shall **onsemi**'s aggregate liability from any obligation arising out of or in connection with the board, under any theory of liability, exceed the purchase price paid for the board, if any.

The board is provided to you subject to the license and other terms per **onsemi**'s standard terms and conditions of sale. For more information and documentation, please visit [www.onsemi.com](http://www.onsemi.com).

## ADDITIONAL INFORMATION

### TECHNICAL PUBLICATIONS:

Technical Library: [www.onsemi.com/design/resources/technical-documentation](http://www.onsemi.com/design/resources/technical-documentation)  
onsemi Website: [www.onsemi.com](http://www.onsemi.com)

ONLINE SUPPORT: [www.onsemi.com/support](http://www.onsemi.com/support)

For additional information, please contact your local Sales Representative at [www.onsemi.com/support/sales](http://www.onsemi.com/support/sales)