

ON Semiconductor

Is Now

onsemi™

To learn more about onsemi™, please visit our website at
www.onsemi.com

onsemi and **onsemi** and other names, marks, and brands are registered and/or common law trademarks of Semiconductor Components Industries, LLC dba "**onsemi**" or its affiliates and/or subsidiaries in the United States and/or other countries. **onsemi** owns the rights to a number of patents, trademarks, copyrights, trade secrets, and other intellectual property. A listing of **onsemi** product/patent coverage may be accessed at www.onsemi.com/site/pdf/Patent-Marking.pdf. **onsemi** reserves the right to make changes at any time to any products or information herein, without notice. The information herein is provided "as-is" and **onsemi** makes no warranty, representation or guarantee regarding the accuracy of the information, product features, availability, functionality, or suitability of its products for any particular purpose, nor does **onsemi** assume any liability arising out of the application or use of any product or circuit, and specifically disclaims any and all liability, including without limitation special, consequential or incidental damages. Buyer is responsible for its products and applications using **onsemi** products, including compliance with all laws, regulations and safety requirements or standards, regardless of any support or applications information provided by **onsemi**. "Typical" parameters which may be provided in **onsemi** data sheets and/or specifications can and do vary in different applications and actual performance may vary over time. All operating parameters, including "Typicals" must be validated for each customer application by customer's technical experts. **onsemi** does not convey any license under any of its intellectual property rights nor the rights of others. **onsemi** products are not designed, intended, or authorized for use as a critical component in life support systems or any FDA Class 3 medical devices or medical devices with a same or similar classification in a foreign jurisdiction or any devices intended for implantation in the human body. Should Buyer purchase or use **onsemi** products for any such unintended or unauthorized application, Buyer shall indemnify and hold **onsemi** and its officers, employees, subsidiaries, affiliates, and distributors harmless against all claims, costs, damages, and expenses, and reasonable attorney fees arising out of, directly or indirectly, any claim of personal injury or death associated with such unintended or unauthorized use, even if such claim alleges that **onsemi** was negligent regarding the design or manufacture of the part. **onsemi** is an Equal Opportunity/Affirmative Action Employer. This literature is subject to all applicable copyright laws and is not for resale in any manner. Other names and brands may be claimed as the property of others.

ON Semiconductor

Is Now

onsemi™

To learn more about onsemi™, please visit our website at
www.onsemi.com

onsemi and **onsemi** and other names, marks, and brands are registered and/or common law trademarks of Semiconductor Components Industries, LLC dba "**onsemi**" or its affiliates and/or subsidiaries in the United States and/or other countries. **onsemi** owns the rights to a number of patents, trademarks, copyrights, trade secrets, and other intellectual property. A listing of **onsemi** product/patent coverage may be accessed at www.onsemi.com/site/pdf/Patent-Marking.pdf. **onsemi** reserves the right to make changes at any time to any products or information herein, without notice. The information herein is provided "as-is" and **onsemi** makes no warranty, representation or guarantee regarding the accuracy of the information, product features, availability, functionality, or suitability of its products for any particular purpose, nor does **onsemi** assume any liability arising out of the application or use of any product or circuit, and specifically disclaims any and all liability, including without limitation special, consequential or incidental damages. Buyer is responsible for its products and applications using **onsemi** products, including compliance with all laws, regulations and safety requirements or standards, regardless of any support or applications information provided by **onsemi**. "Typical" parameters which may be provided in **onsemi** data sheets and/or specifications can and do vary in different applications and actual performance may vary over time. All operating parameters, including "Typicals" must be validated for each customer application by customer's technical experts. **onsemi** does not convey any license under any of its intellectual property rights nor the rights of others. **onsemi** products are not designed, intended, or authorized for use as a critical component in life support systems or any FDA Class 3 medical devices or medical devices with a same or similar classification in a foreign jurisdiction or any devices intended for implantation in the human body. Should Buyer purchase or use **onsemi** products for any such unintended or unauthorized application, Buyer shall indemnify and hold **onsemi** and its officers, employees, subsidiaries, affiliates, and distributors harmless against all claims, costs, damages, and expenses, and reasonable attorney fees arising out of, directly or indirectly, any claim of personal injury or death associated with such unintended or unauthorized use, even if such claim alleges that **onsemi** was negligent regarding the design or manufacture of the part. **onsemi** is an Equal Opportunity/Affirmative Action Employer. This literature is subject to all applicable copyright laws and is not for resale in any manner. Other names and brands may be claimed as the property of others.

AND9013

CAT3661 LED Driver Evaluation Board

Prepared by: Cornel Rotaru
ON Semiconductor



ON Semiconductor®

<http://onsemi.com>

APPLICATION NOTE

Introduction

This document describes the CAT3661 Evaluation board for the ON Semiconductor CAT3661 1-Channel Low-Power Quad-Mode LED Driver. The functionality and major parameters of the CAT3661 can be evaluated with the CAT3661EVAL board.

The CAT3661 is a high efficiency low power quad-mode fractional charge pump that drives one LED up to 5 mA of current.

Additional details can be found in the CAT3661 data sheet.

Board Hardware

The evaluation board consists of one CAT3661 device that drives a white LED.

The VIN test point is connected to the VIN supply of the CAT3661. The voltage range is 2.0 V to 5.5 V.

The device starts when a voltage between 1.3 V and the VIN supply is applied to the EN (enable pin). The EN pin of the device is connected to the EN test point.

The CAT3661 can detect events as Open/Short LED and Low Battery. The circuit has two “open-drain” outputs associated with these events. Each is connected to the “LED Fault” or “LOW BAT.” test points. The ‘Open/Short LED’ and ‘Low Battery’ fault signals have been enabled with pull-up resistors on the board. The ‘Low Battery’ voltage trip point has been set to a default value of 2.4 V.

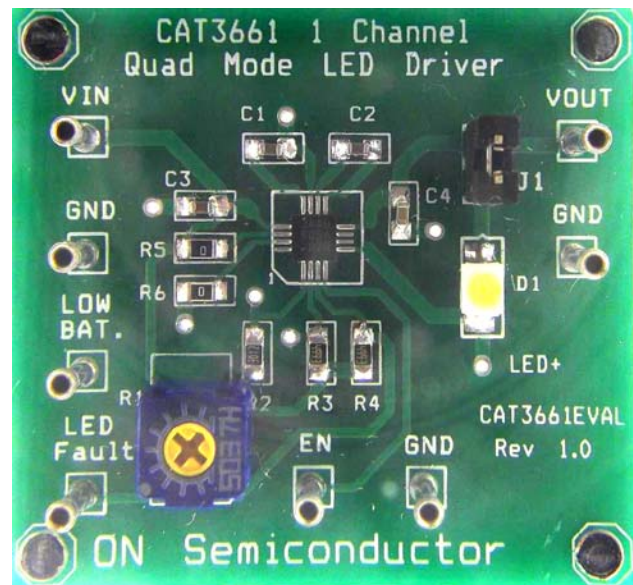


Figure 1. CAT3661EVAL Board

AND9013

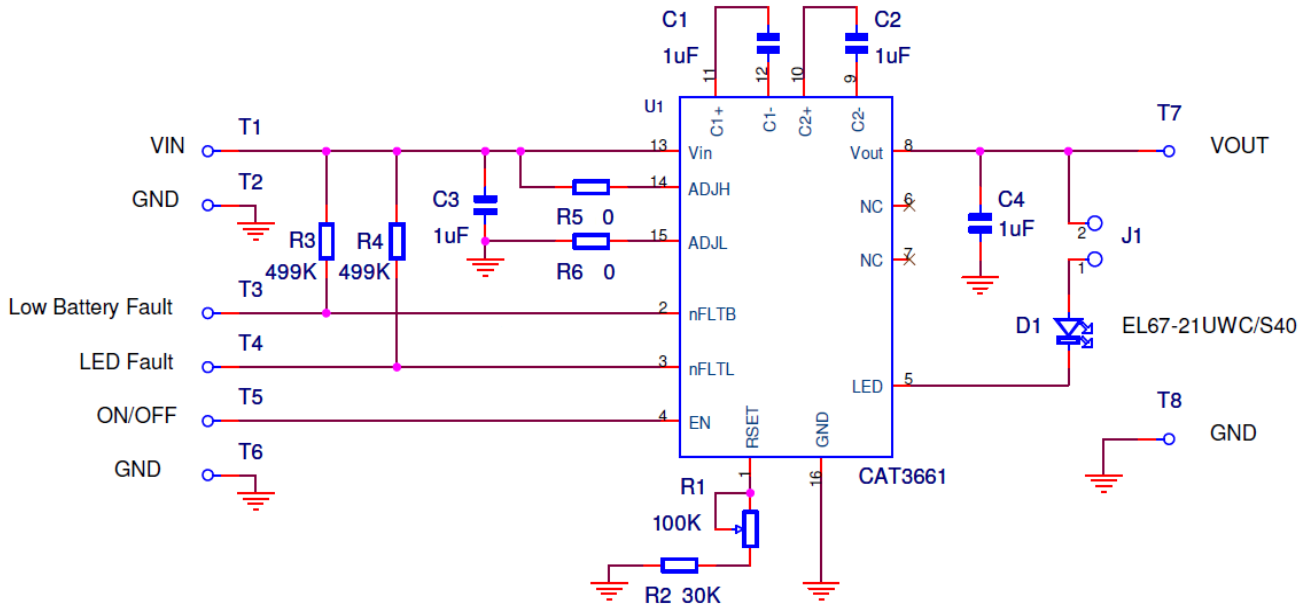


Figure 2. CAT3661EVAL Board Schematic

Table 1. CAT3661EVAL BOARD LIST OF COMPONENTS

Name	Manufacturer	Description	Part Number	Units
U1	ON Semiconductor	1-Channel Low-Power Quad Mode LED Driver, TQFN-16	CAT3661TD-HV3-GT3	1
C1 – C4	AVX	Ceramic Capacitor 1.0 μ F / 10 V, 10%, X5R, 0603	0603ZD105KAT2A	4
R1	Vishay	Trim Pot. 100 k Ω , 10%	T63YB-100K-10%-D06	1
R2	Vishay	SMD Resistor 1/10W, 30 K Ω , 0603 1%	CRCW0603 100 30K 1% e3	1
R3, R4	Yageo	SMD Resistor 1/8W, 499 k Ω , 0805 1%	RC0805FR-07499KL	2
R5, R6	Yageo	SMD Resistor 1/8W, 0 Ω , 0805 1%	RC0805JR-070RL	2
D1	Everlight	White LED, 290mcd, 120grd, PLCC	EL67-21UWC/S40	1
T1-T8	MPE Garry	Test points	BL1 x 36PF	8
J1	MPE Garry	2 pin Header connector	ASL040G	1

Operating Procedure

The CAT3661EVAL board can only be configured in stand-alone mode.

Stand-alone

In this configuration, the CAT3661EVAL board is powered from an external supply between the VIN and GND pins.

The enable/shutdown input, EN is set by an external voltage and should be connected between the EN and GND test points.

Quick Test Procedure

1. Required Equipment

- CAT3661EVAL board
- +3V_{DC} power supply
- Ammeter
- Multimeter or voltmeter and ohmmeter

2. Set-up

- Verify that all power supplies are off.
- On the CAT3661EVAL board, verify that a shunt is installed on jumper J1.
- Connect a +3V_{DC} supply between the VIN and GND pins.
- Connect the VIN and EN pins together with a wire.
- Measure the RSET resistance between RSET and the GND test points. Adjust the RSET resistance to 60.7 kΩ.
- Turn on the +3V_{DC} power supply.


3. Operation Verification

- The CAT3661 is operating normally and the output voltage should be about 4.4 V.
- Disconnect EN from the VIN. Connect EN to the GND test point to disable the device.
- Remove jumper J1 and install an ammeter between the pin 1 and pin 2 of the jumper to measure the LED current.
- Connect the EN pin to the VIN test point to enable the device.
- Measure the LED current using the ammeter. The LED current should be about 3.0 mA.
- Adjust the potentiometer to increase or decrease the LED current.
- Connect EN test point to GND. The device enters shutdown mode and the output is disabled.
- Turn off the +3V_{DC} power supply.

4. Start / Stop the Demonstration

The user can disable the outputs by pulling the EN pin to GND. To enable the device, connect the EN pin to +1.3V_{DC} or greater.

At any time the user can stop the demonstration, by pulling the EN pin to GND or by turning off the +3V_{DC} supply.

ON Semiconductor and  are registered trademarks of Semiconductor Components Industries, LLC (SCILLC). SCILLC reserves the right to make changes without further notice to any products herein. SCILLC makes no warranty, representation or guarantee regarding the suitability of its products for any particular purpose, nor does SCILLC assume any liability arising out of the application or use of any product or circuit, and specifically disclaims any and all liability, including without limitation special, consequential or incidental damages. "Typical" parameters which may be provided in SCILLC data sheets and/or specifications can and do vary in different applications and actual performance may vary over time. All operating parameters, including "Typicals" must be validated for each customer application by customer's technical experts. SCILLC does not convey any license under its patent rights nor the rights of others. SCILLC products are not designed, intended, or authorized for use as components in systems intended for surgical implant into the body, or other applications intended to support or sustain life, or for any other application in which the failure of the SCILLC product could create a situation where personal injury or death may occur. Should Buyer purchase or use SCILLC products for any such unintended or unauthorized application, Buyer shall indemnify and hold SCILLC and its officers, employees, subsidiaries, affiliates, and distributors harmless against all claims, costs, damages, and expenses, and reasonable attorney fees arising out of, directly or indirectly, any claim of personal injury or death associated with such unintended or unauthorized use, even if such claim alleges that SCILLC was negligent regarding the design or manufacture of the part. SCILLC is an Equal Opportunity/Affirmative Action Employer. This literature is subject to all applicable copyright laws and is not for resale in any manner.

PUBLICATION ORDERING INFORMATION

LITERATURE FULFILLMENT:

Literature Distribution Center for ON Semiconductor
 P.O. Box 5163, Denver, Colorado 80217 USA
Phone: 303-675-2175 or 800-344-3860 Toll Free USA/Canada
Fax: 303-675-2176 or 800-344-3867 Toll Free USA/Canada
Email: orderlit@onsemi.com

N. American Technical Support: 800-282-9855 Toll Free
 USA/Canada
Europe, Middle East and Africa Technical Support:
 Phone: 421 33 790 2910
Japan Customer Focus Center
 Phone: 81-3-5773-3850

ON Semiconductor Website: www.onsemi.com

Order Literature: <http://www.onsemi.com/orderlit>

For additional information, please contact your local Sales Representative