

ON Semiconductor

Is Now

onsemi™

To learn more about onsemi™, please visit our website at
www.onsemi.com

onsemi and **onsemi** and other names, marks, and brands are registered and/or common law trademarks of Semiconductor Components Industries, LLC dba "**onsemi**" or its affiliates and/or subsidiaries in the United States and/or other countries. **onsemi** owns the rights to a number of patents, trademarks, copyrights, trade secrets, and other intellectual property. A listing of **onsemi** product/patent coverage may be accessed at www.onsemi.com/site/pdf/Patent-Marking.pdf. **onsemi** reserves the right to make changes at any time to any products or information herein, without notice. The information herein is provided "as-is" and **onsemi** makes no warranty, representation or guarantee regarding the accuracy of the information, product features, availability, functionality, or suitability of its products for any particular purpose, nor does **onsemi** assume any liability arising out of the application or use of any product or circuit, and specifically disclaims any and all liability, including without limitation special, consequential or incidental damages. Buyer is responsible for its products and applications using **onsemi** products, including compliance with all laws, regulations and safety requirements or standards, regardless of any support or applications information provided by **onsemi**. "Typical" parameters which may be provided in **onsemi** data sheets and/or specifications can and do vary in different applications and actual performance may vary over time. All operating parameters, including "Typicals" must be validated for each customer application by customer's technical experts. **onsemi** does not convey any license under any of its intellectual property rights nor the rights of others. **onsemi** products are not designed, intended, or authorized for use as a critical component in life support systems or any FDA Class 3 medical devices or medical devices with a same or similar classification in a foreign jurisdiction or any devices intended for implantation in the human body. Should Buyer purchase or use **onsemi** products for any such unintended or unauthorized application, Buyer shall indemnify and hold **onsemi** and its officers, employees, subsidiaries, affiliates, and distributors harmless against all claims, costs, damages, and expenses, and reasonable attorney fees arising out of, directly or indirectly, any claim of personal injury or death associated with such unintended or unauthorized use, even if such claim alleges that **onsemi** was negligent regarding the design or manufacture of the part. **onsemi** is an Equal Opportunity/Affirmative Action Employer. This literature is subject to all applicable copyright laws and is not for resale in any manner. Other names and brands may be claimed as the property of others.

Comandor Cookbook



ON Semiconductor®

<http://onsemi.com>

APPLICATION NOTE

Comandors are versatile, low cost, dual-channel gain control devices for audio frequencies. They are used in tape decks, cordless telephones, and wireless microphones performing noise reduction. Electronic organs, modems and mobile telephone equipment use comandors for signal level control.

So what is companding? Why do it at all? What happens when we do it? Comandor is the contraction of the two words compressor and expander. There is one basic reason to compress a signal before sending it through a telephone line or recording it on a cassette tape: to process that signal (music, speech, data) so that all parts of it are above the inherent noise floor of the transmission medium and yet not running into the maximum dynamic range limits, causing clipping and distortion. The diagrams below demonstrate the idea; they are not totally correct because in the real world of electronics the 3.0 kHz tone is riding on the 1.0 kHz tone. They are shown separated for better explanation.

Figure 1 is the signal from the source. Figure 2 shows the noise always in the transmission medium. Figure 3 shows the max limits of the transmission medium and what happens when a signal larger than those limits is sent through it. Figure 4 is the result of compressing the signal (note that the larger signal would not be clipped when transmitted).

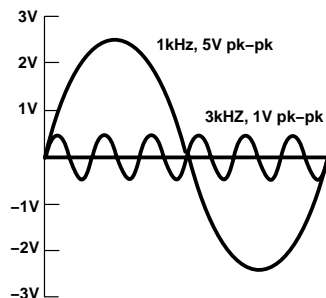


Figure 1. Original Signal Input



Figure 2. Wide-Band Noise Floor of Transmission Line

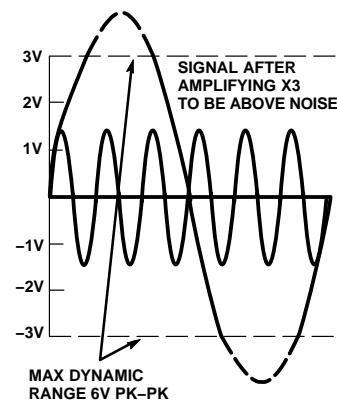


Figure 3.

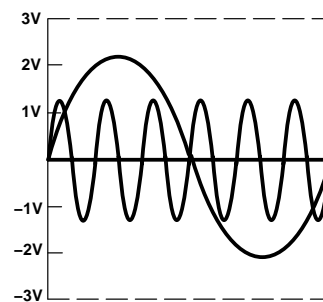


Figure 4. Signal After Compression

AND8160/D

The received/playback signal is processed (expanded) in exactly the same – only inverted – ratio as the input signal was compressed. The end result is a clean, undistorted signal with a high signal-to-noise ratio.

This document has been designed to give the reader a basic working knowledge of the ON Semiconductor Compressor family. The analyses of three primary applications will be accompanied by “recipes” describing how to select external components (for both proper operation and function modification). Schematic and artwork for an application board are also provided.

The basic blocks in a compressor are the current-controlled variable gain cell (ΔG), voltage-to-current converter (rectifier), and operational amplifier. Each ON Semiconductor compressor package has two identical, independent channels with the following block diagrams (notice that the 570/71 is different from the 572).

The operational amplifier is the main signal path and output drive.

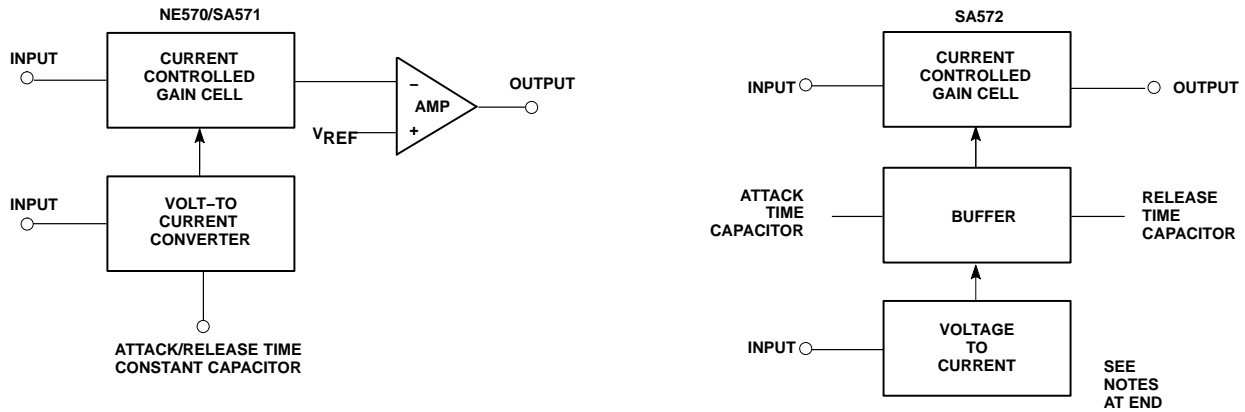


Figure 5. Block Diagrams

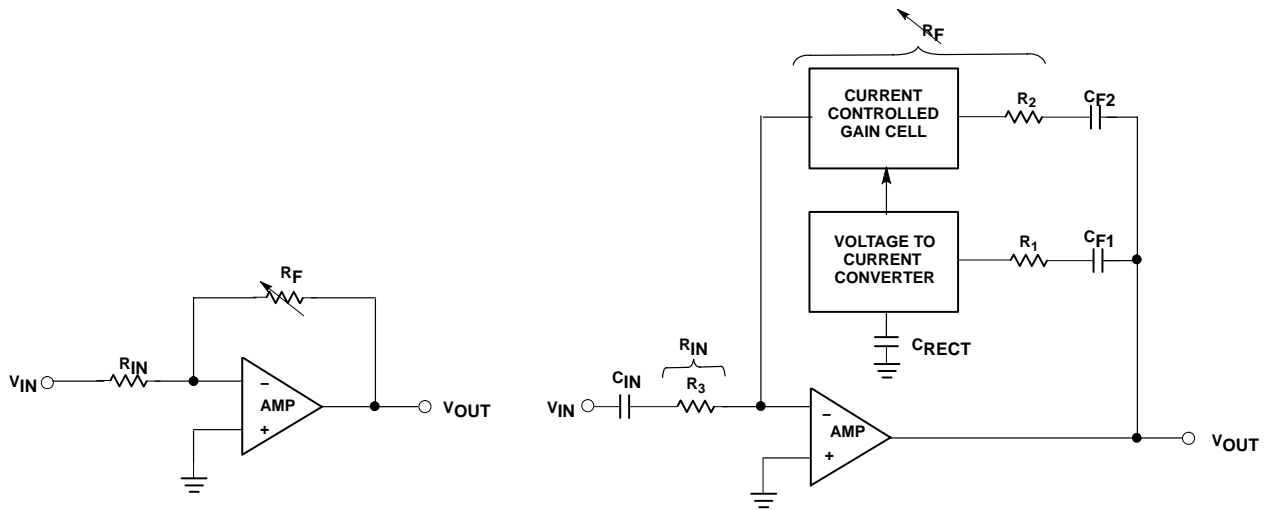


Figure 6. Basic Compressor

The full-wave averaging rectifier measures the AC amplitude of a signal and develops a control current for the variable gain cell.

The variable gain cell uses the rectifier control current to provide variable gain control for the operational amplifier gain block.

The compandor can function as a Compressor, Expander, and Automatic Level Controller or as a complete compressor/expandor system as described in the following:

1. The COMPRESSOR function processes uncontrolled input signals into controlled output signals. The purpose of this is to avoid distortion caused by a narrow dynamic range medium, such as telephone lines, RF and satellite transmissions, and magnetic tape. The Compressor can also limit the level of a signal.
2. The EXPANDOR function allows a user to increase the dynamic range of an incoming compressed signal such as radio broadcasts.
3. The compressor/expandor system allows a user to retain dynamic range and reduce the effects of noise introduced by the transmission medium.
4. The AUTOMATIC LEVEL CONTROL (ALC) function (like the familiar automatic gain control) adjusts its gain proportionally with the input amplitude. This ALC circuit therefore transforms a widely varying input signal into a fixed amplitude output signal without clipping and distortion.

How to Design Compandor Circuits

The rest of the cookbook will provide you with basic compressor, expander, and automatic level control application information. A SA571 has been used in all of the circuits. If high-fidelity audio or separately programmable attack and decay time are needed, the SA572 with a low noise op amp should be used.

Compressor

The compressor (see Figure 6) utilizes all basic building blocks of the compandor. In this configuration, the variable gain cell is placed in the feedback loop of the standard inverting amplifier circuit. The gain equation is $A_V = -R_F/R_{IN}$. As shown above, the variable gain cell acts as a variable feedback resistor (R_F) (see Figure 6).

As the input signal increases above the crossover level of 0 dB, the variable resistor decreases in value. This causes the gain to decrease, thus limiting the output amplitude.

Below the crossover level of 0 dB, an increase in input signal causes the variable resistor to increase in value, thereby causing the output signal's amplitude to increase.

In the compressor configuration, the rectifier is connected to the output.

The complete equation for the compressor gain is:

$$\text{Gain comp.} = \left[\frac{R_1 R_2 I_B}{2 R_3 V_{IN}(\text{avg})} \right]^{1/2}$$

where: $R_1 = 10 \text{ k}\Omega$
 $R_2 = 20 \text{ k}\Omega$
 $R_3 = 20 \text{ k}\Omega$
 $I_B = 140 \text{ }\mu\text{A}$

$$V_{IN}(\text{avg}) = 0.9(V_{IN}(\text{RMS}))$$

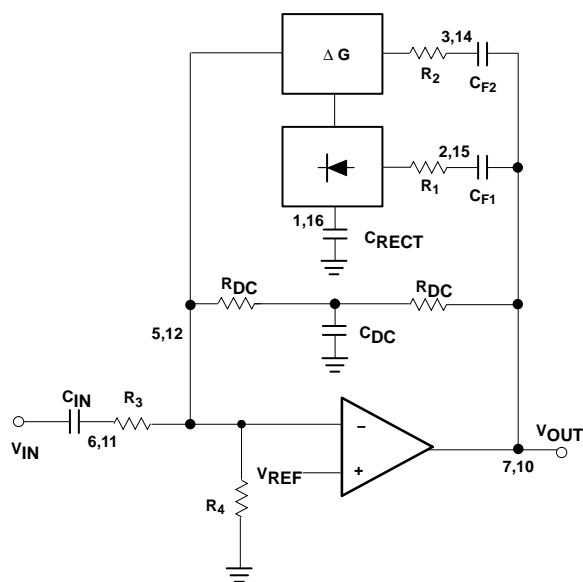


Figure 7. Basic Compressor (NE570/SA571 pinout)

Compressor Recipe

1. DC bias the output half way between the supply and ground to get maximum headroom. The circuit in Figure 7 is designed around a system supply of 6.0 V, thus the output DC level should be 3.0 V.

$$V_{OUT \text{ DC}} = (1 + (2R_{DC}/R_4)) V_{REF}$$

where: $R_4 = 30 \text{ k}\Omega$
 $V_{REF} = 1.8 \text{ V}$
 R_{DC} is external

manipulating the equation, the result is . . .

$$R_{DC} = \left(\left(\frac{V_{OUT}}{V_{REF}} \right) - 1 \right) \frac{R_4}{2}$$

Note that the $C_{(DC)}$ should be large enough to totally short out any AC in this feedback loop.

2. Analyze the OUTPUT signal's anticipated amplitude.
 - a) If larger than 2.8V peak, R_2 needs to be increased (see INGREDIENTS section).
 - b) If larger than 3.0 V peak, R_1 will also need to be increased.

By limiting the peak input currents we avoid signal distortion.

3. The input and output coupling caps need to be large enough not to attenuate any desired frequencies ($X_C = 1/(2\pi f \cdot C)$).
4. The C_{RECT} should be 1.0 μF to 2.0 μF for initial setup. This directly affects Attack and Release times.
5. An input buffer may be necessary if the source's output impedance needs matching.
6. Pre-emphasis may be used to reduce noise/pumping, breathing, etc., if present. See the SA571 data sheet for specific details.

AND8160/D

7. Distortion (THD) trim pins are available if the already low distortion needs to be further reduced. Refer to data sheet for trimming network. Note that if not used, the THD trim pins should have 200 pF caps to ground.

8. At very low input signal levels, the rectifier's errors become significant and can be reduced with the Low Level Mistracking network. (This technique prevents infinite compression at low input levels.)

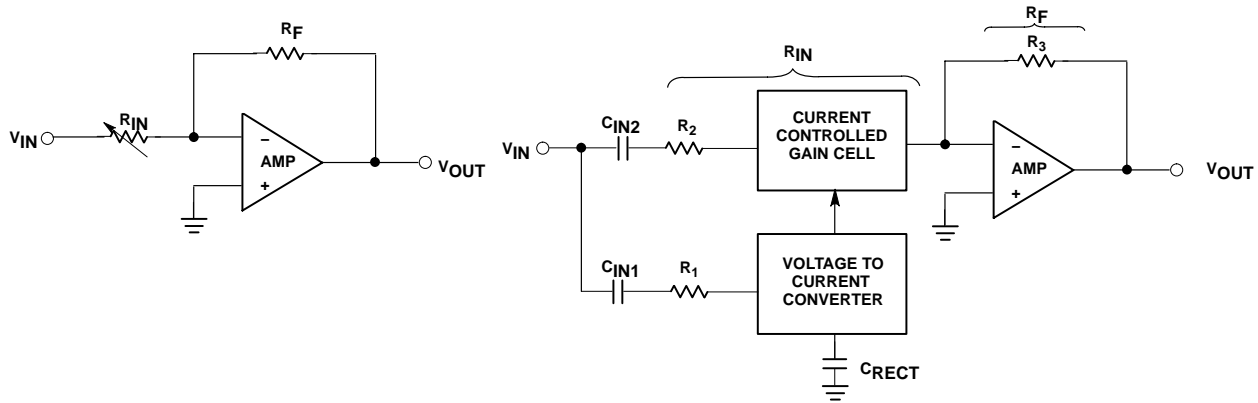


Figure 8. Basic Expander

Expander

The EXPANDOR utilizes all the basic building blocks of the compandor (see Figure 8). In this configuration the variable gain cell is placed in the inverting input lead of the operational amplifier and acts as a variable input resistance, R_{IN} . The basic gain equation for operational amplifiers in the standard inverting feedback loop is $A_V = -R_F/R_{IN}$.

As the input amplitude increases above the crossover level of 0 dBm, this variable resistor decreases in value, causing the gain to increase, thus forcing the output amplitude to increase (refer to Figure 11).

Below the crossover level, an increase in input amplitude causes the variable resistor to increase in value, thus forcing the output amplitude to decrease.

The complete equation for the expander gain is:

$$\text{Gain}_{\text{expander}} = \left(\frac{2 R_3 V_{IN}(\text{avg})}{R_1 R_2 I_B} \right)^2$$

where: $R_1 = 10 \text{ k}\Omega$
 $R_2 = 20 \text{ k}\Omega$
 $R_3 = 20 \text{ k}\Omega$
 $I_B = 140 \text{ }\mu\text{A}$

$$V_{IN}(\text{avg}) = 0.9 (V_{IN}(\text{RMS}))$$

In the expander configuration the rectifier is connected to the input.

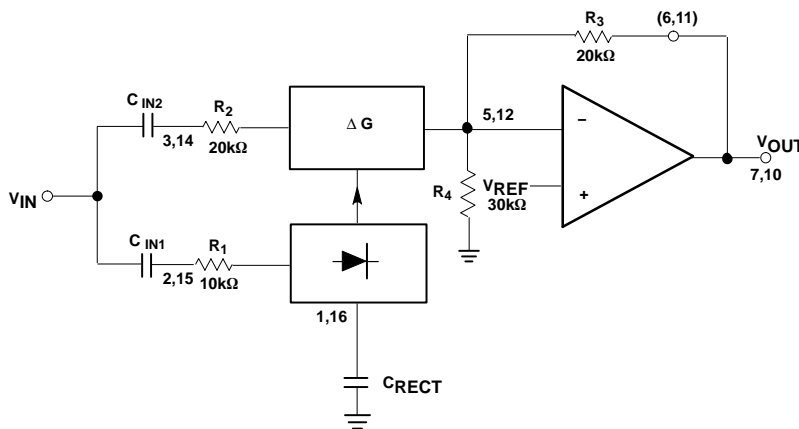


Figure 9. Basic Expander (NE570/SA571 pinout)

Expander Recipe

1. DC bias the output halfway between the supply and ground to get maximum headroom. The circuit in Figure 9 is designed around a system supply of 6.0 V so the output DC level should be 3.0 V.

$$V_{OUT\ DC} = (1 + R_3/R_4) V_{REF}$$

where: $R_3 = 20\text{ k}\Omega$
 $R_4 = 30\text{ k}\Omega$
 $V_{REF} = 1.8\text{ V}$

Note that when using a supply voltage higher than 6.0 V the DC output level should be adjusted. To increase the DC output level, it is recommended that R_4 be decreased by adding parallel resistance to it. (Changing R_3 would also affect the expander's AC gain and thus cause a mismatch in a companding system.)

2. Analyze the input signal's anticipated amplitude:
 - a) If larger than 2.8 V peak, R_2 needs to be increased (see INGREDIENTS section).
 - b) If larger than 3.0 V peak, R_1 will also need to be increased (see INGREDIENTS).

By limiting the peak input currents we avoid signal distortion.

3. The input and output decoupling caps need to be large enough not to attenuate any desired frequencies.
4. The C_{RECT} should be 1.0 μF to 2.0 μF for initial setup.
5. An input buffer may be necessary if the source's output impedance needs matching.
6. De-emphasis would be necessary if the complementary compressor circuit had been pre-emphasized (as in a tape deck application).
7. Distortion (THD) trim pins are available if the already low distortion needs to be further reduced. Note that if not used, the THD trim pins should have 200 pF caps to ground.
8. At very low input signal levels, the rectifier's errors become significant and can be reduced with the Low Level Mistracking network. (This technique prevents infinite expansion at low input levels.)

In the ALC configuration, (Figure 10), the variable gain cell is placed in the feedback loop of the operational amplifier (as in the Compressor) and the rectifier is connected to the input.

As the input amplitude increases above the crossover point, the overall system gain decreases proportionally, holding the output amplitude constant.

As the input amplitude decreases below the crossover point, the overall system gain increases proportionally, holding the output amplitude at the same constant level.

The complete gain equation for the ALC is:

$$\text{Gain} = \frac{R_1 R_2 I_B}{2 R_3 V_{IN}(\text{avg})}$$

$$\text{Output Level} = \frac{R_1 R_2 I_B}{2 R_3} \left(\frac{V_{IN}}{V_{IN}(\text{avg})} \right)$$

$$\text{where } \frac{V_{IN}}{V_{IN}(\text{avg})} = \frac{\pi}{2\sqrt{2}} = 1.11 \text{ (for sine wave)}$$

Note that for very low input levels, ALC may not be desired and to limit the maximum gain, resistor R_X has been added.

The modified gain equation is:

$$\text{Gain max.} = \frac{\left(\frac{R_1 + R_X}{V_{REF}} \right) \cdot R_2 \cdot I_B}{2 R_3}$$

$$R_X \cong ((\text{desired max gain}) \times 26\text{ k}\Omega) - 10\text{ k}\Omega$$

Ingredients

[Application guidelines for internal and external components (and input/output constraints) needed to tailor (cook) each of the three entrees (applications) to your taste.]

R_1 (10 k Ω) limits input current to the rectifier. This current should not exceed an AC peak value of $\pm 300\text{ }\mu\text{A}$. An external resistor may be placed in series with R_1 if the input voltage to the rectifier will exceed $\pm 3.0\text{ V}$ peak (i.e., $10\text{ k} \times 300\text{ }\mu\text{A} = 3.0\text{ V}$).

R_2 (20 k Ω) limits input current to the variable gain cell. This current should not exceed an AC peak value of $\pm 140\text{ }\mu\text{A}$. Again, an external resistor has to be placed in series with R_2 if the input voltage to the variable gain cell exceeds $\pm 2.8\text{ V}$ (i.e., $20\text{ k} \times 140\text{ }\mu\text{A}$).

R_3 (20 k Ω) acts in conjunction with R_4 as the feedback resistor (R_F) (expander configuration) in the equation. (R_3 's value can be either reduced or increased externally.) However, it is recommended that R_4 be the one to change when adjusting the output DC level.

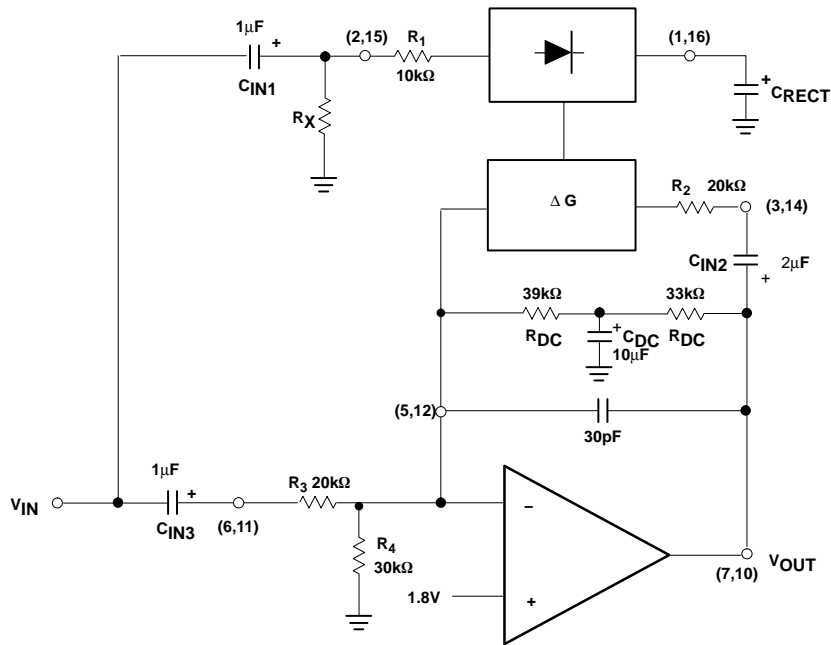
R_4 (30 k Ω) acts as the input resistor (R_{IN}) in the standard non-inverting op amp circuit. (Its value can only be reduced.)

$$V_{OUT\ DC} = (1 + (R_3/R_4)) V_{REF} \text{ (for the Expander)}$$

$$V_{OUT\ DC} = (1 + (2R_{DC}/R_4)) V_{REF} \text{ (for the Compander, ALC)}$$

[The purpose of these DC biasing equations is to allow the designer to set the output halfway between the supply rails for largest headroom (usually some positive voltage and ground).]

AND8160/D



**Figure 10. Automatic Level Control
(NE570/SA571 pinout)**

C_{DC} acts as an AC shunt to ground to totally remove the DC biasing resistors from the AC gain equation.

C_{IN} , C_F caps are AC signal coupling caps.

C_{RECT} acts as the rectifier's filter cap and directly affects the response time of the circuit. There is a trade-off, though, between fast attack and decay times and distortion.

The time constant is: $10\text{ k}\Omega \times C_{RECT}$.

The total harmonic distortion (THD) is approximated by:

$$\text{THD} \cong (1.0\ \mu\text{F}/C_{RECT}) (1.0\ \text{kHz}/\text{freq.}) \times 0.2\%$$

System Levels of a Complete Comping System

Figure 11 demonstrates the compressing and expanding functions:

Point A represents a wide dynamic range signal with a maximum amplitude of +16 dB and minimum amplitude of -80 dB.

Point B represents the compressor output showing a 2:1 reduction in dynamic range (-40 dB is increased to -20 dB, for example). Point B can also be seen as the dynamic range of a transmission medium. Transmission noise is present at the -60 dB level from Point B to Point C.

Point C represents the input signal to the expander.

Point D represents the output of the expander. The signal transformation from Point C to D represents a 1:2 expansion.

NOTES:

The SA572 differs from the 570/571 in that:

1. There is no internal op amp.
2. The attack and release times are programmed separately.

AND8160/D

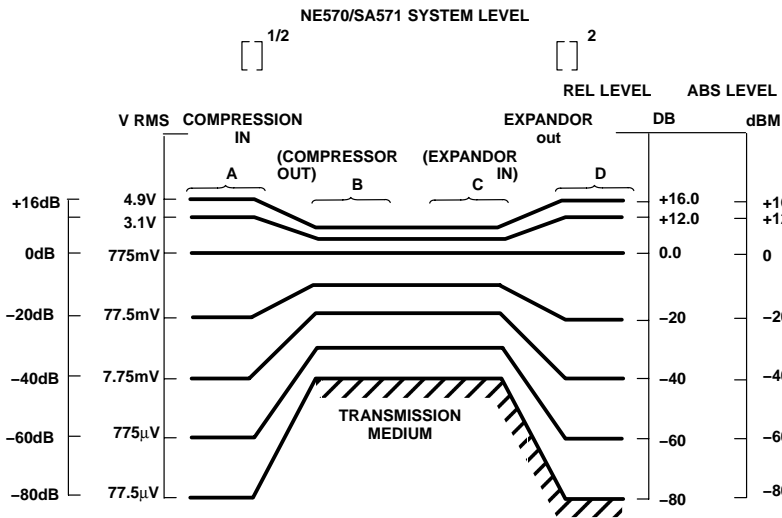


Figure 11. System Levels of a Complete Companding System

Application Board

Shown below is the schematic (Figure 12) for NE570/SA571 evaluation/demo board. This board provides

one channel of Expansion and one channel of Compression (which can be switched to Automatic Level Control).

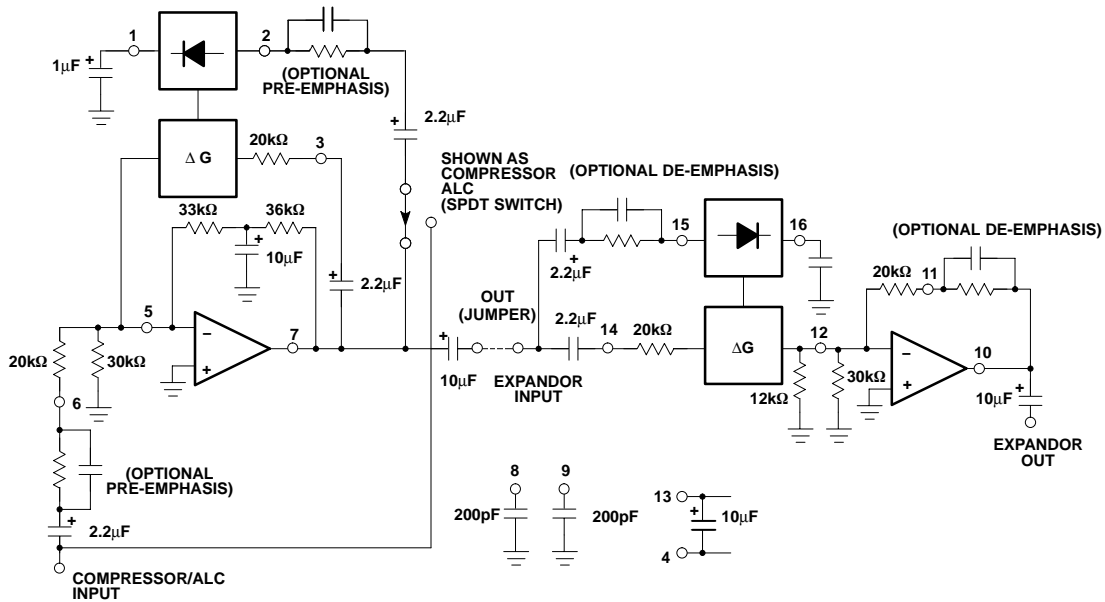



Figure 12.

ON Semiconductor and  are registered trademarks of Semiconductor Components Industries, LLC (SCILLC). SCILLC reserves the right to make changes without further notice to any products herein. SCILLC makes no warranty, representation or guarantee regarding the suitability of its products for any particular purpose, nor does SCILLC assume any liability arising out of the application or use of any product or circuit, and specifically disclaims any and all liability, including without limitation special, consequential or incidental damages. "Typical" parameters which may be provided in SCILLC data sheets and/or specifications can and do vary in different applications and actual performance may vary over time. All operating parameters, including "Typicals" must be validated for each customer application by customer's technical experts. SCILLC does not convey any license under its patent rights nor the rights of others. SCILLC products are not designed, intended, or authorized for use as components in systems intended for surgical implant into the body, or other applications intended to support or sustain life, or for any other application in which the failure of the SCILLC product could create a situation where personal injury or death may occur. Should Buyer purchase or use SCILLC products for any such unintended or unauthorized application, Buyer shall indemnify and hold SCILLC and its officers, employees, subsidiaries, affiliates, and distributors harmless against all claims, costs, damages, and expenses, and reasonable attorney fees arising out of, directly or indirectly, any claim of personal injury or death associated with such unintended or unauthorized use, even if such claim alleges that SCILLC was negligent regarding the design or manufacture of the part. SCILLC is an Equal Opportunity/Affirmative Action Employer. This literature is subject to all applicable copyright laws and is not for resale in any manner.

PUBLICATION ORDERING INFORMATION

LITERATURE FULFILLMENT:

Literature Distribution Center for ON Semiconductor
P.O. Box 61312, Phoenix, Arizona 85082-1312 USA
Phone: 480-829-7710 or 800-344-3860 Toll Free USA/Canada
Fax: 480-829-7709 or 800-344-3867 Toll Free USA/Canada
Email: orderlit@onsemi.com

N. American Technical Support: 800-282-9855 Toll Free
USA/Canada

Japan: ON Semiconductor, Japan Customer Focus Center
2-9-1 Kamimeguro, Meguro-ku, Tokyo, Japan 153-0051
Phone: 81-3-5773-3850

ON Semiconductor Website: <http://onsemi.com>

Order Literature: <http://www.onsemi.com/litorder>

For additional information, please contact your
local Sales Representative.